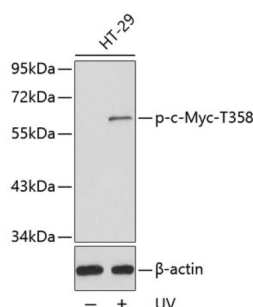


MYC (pT358) Antibody

Catalogue No.: abx000458



Western blot analysis of lysates from HT-29 cells, using Phospho-c-Myc-T358 Antibody. HT-29 cells treated by UV. Secondary antibody: HRP-conjugated Goat anti-Rabbit IgG (H+L) at 1/10000 dilution. Lysates/proteins: 25 µg per lane. Blocking buffer: 3% BSA.

MYC (pT358) Antibody is a Rabbit Polyclonal antibody against MYC (pT358). The protein encoded by this gene is a multifunctional, nuclear phosphoprotein that plays a role in cell cycle progression, apoptosis and cellular transformation. It functions as a transcription factor that regulates transcription of specific target genes. Mutations, overexpression, rearrangement and translocation of this gene have been associated with a variety of hematopoietic tumors, leukemias and lymphomas, including Burkitt lymphoma. There is evidence to show that alternative translation initiations from an upstream, in-frame non-AUG (CUG) and a downstream AUG start site result in the production of two isoforms with distinct N-termini. The synthesis of non-AUG initiated protein is suppressed in Burkitt's lymphomas, suggesting its importance in the normal function of this gene.

Target:	MYC (pT358)
Clonality:	Polyclonal
Reactivity:	Human
Tested Applications:	ELISA, WB
Host:	Rabbit
Recommended dilutions:	ELISA: 1 µg/ml, WB: 1/500 - 1/2000. Optimal dilutions/concentrations should be determined by the end user.
Conjugation:	Unconjugated
Immunogen:	A phospho specific peptide corresponding to residues surrounding T358 of human c-Myc
Isotype:	IgG
Form:	Liquid
Purification:	Purified by affinity chromatography.
Storage:	Aliquot and store at -20°C. Avoid repeated freeze/thaw cycles.

Datasheet

Version: 6.0.0
Revision date: 13 Sep 2025



UniProt Primary AC: P01106 ([UniProt](#), [ExPASy](#))

Gene Symbol: MYC

GeneID: [4609](#)

KEGG: hsa:4609

String: [9606.ENSP00000479618](#)

Molecular Weight: Calculated MW: 51 kDa
Observed MW: 65 kDa

Buffer: PBS, pH 7.3, containing 0.02% sodium azide, 50% glycerol.

Concentration: > 0.2 mg/ml

Note: THIS PRODUCT IS FOR RESEARCH USE ONLY. NOT FOR USE IN DIAGNOSTIC, THERAPEUTIC OR COSMETIC PROCEDURES. NOT FOR HUMAN OR ANIMAL CONSUMPTION.

For Reference Only