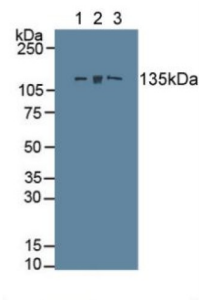
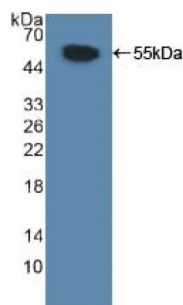


Myosin Light Chain Kinase (MYLK) Antibody

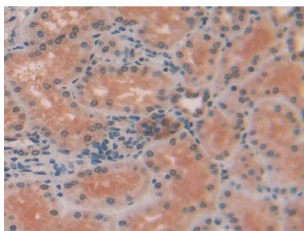
Catalogue No.:abx102570



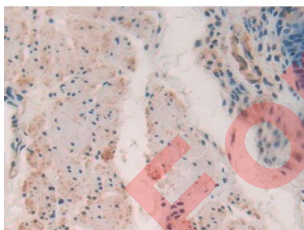
Western blot analysis of (1) Human Lung Tissue, (2) Rat Prostate Gland Tissue and (3) Rat Bladder Tissue.



Western blot analysis of recombinant Human MYLK.



IHC-P analysis of Human Kidney Tissue, with DAB staining.



IHC-P analysis of Human Esophagus Cancer Tissue, with DAB staining.

Polyclonal Antibody to Myosin Light Chain Kinase (MYLK).

**Target:** Myosin Light Chain Kinase (MYLK)

**Clonality:** Polyclonal

**Reactivity:** Human

# Datasheet

Version: 3.0.0

Revision date: 21 Aug 2025



**Tested Applications:** WB, IHC, IF/ICC

**Host:** Rabbit

**Recommended dilutions:** WB: 1-5 µg/ml, IHC: 5-20 µg/ml, IF/ICC: 5-20 µg/ml. Optimal dilutions/concentrations should be determined by the end user.

**Conjugation:** Unconjugated

**Immunogen:** MYLK (Phe1661-Asp1877)

**Form:** Liquid

**Purification:** Purified by antigen-specific affinity chromatography, followed by Protein A affinity chromatography.

**Storage:** Aliquot and store at -20°C. Avoid repeated freeze/thaw cycles.

**UniProt Primary AC:** Q15746 ([UniProt](#), [ExPASy](#))

**KEGG:** hsa:4638

**String:** [9606.ENSP00000353452](#)

**Buffer:** 0.01 M PBS, pH 7.4, containing 0.05% Proclin-300, 50% glycerol.

**Note:** THIS PRODUCT IS FOR RESEARCH USE ONLY. NOT FOR USE IN DIAGNOSTIC, THERAPEUTIC OR COSMETIC PROCEDURES. NOT FOR HUMAN OR ANIMAL CONSUMPTION.