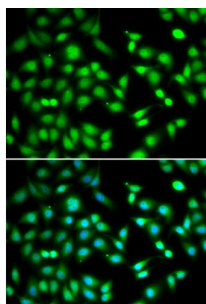


Cyclin Dependent Kinase Inhibitor 2D (CDKN2D) Antibody

Catalogue No.: abx005030



Immunofluorescence analysis of HeLa cells using CDKN2D Antibody

CDKN2D Antibody is a Rabbit Polyclonal antibody against CDKN2D. The protein encoded by this gene is a member of the INK4 family of cyclin-dependent kinase inhibitors. This protein has been shown to form a stable complex with CDK4 or CDK6, and prevent the activation of the CDK kinases, thus function as a cell growth regulator that controls cell cycle G1 progression. The abundance of the transcript of this gene was found to oscillate in a cell-cycle dependent manner with the lowest expression at mid G1 and a maximal expression during S phase. The negative regulation of the cell cycle involved in this protein was shown to participate in repressing neuronal proliferation, as well as spermatogenesis. Two alternatively spliced variants of this gene, which encode an identical protein, have been reported.

Target:	Cyclin Dependent Kinase Inhibitor 2D (CDKN2D)
Clonality:	Polyclonal
Reactivity:	Human
Tested Applications:	IF/ICC
Host:	Rabbit
Recommended dilutions:	IF/ICC: 1/50 - 1/100. Optimal dilutions/concentrations should be determined by the end user.
Conjugation:	Unconjugated
Immunogen:	Recombinant fusion protein corresponding to human CDKN2D
Isotype:	IgG
Form:	Liquid
Purification:	Purified by affinity chromatography.
Storage:	Aliquot and store at -20°C. Avoid repeated freeze/thaw cycles.
UniProt Primary AC:	P55273 (UniProt , ExPASy)

Datasheet

Version: 4.0.0
Revision date: 24 Jun 2025



Gene Symbol: CDKN2D

GeneID: [1032](#)

NCBI Accession: NP_001791.1

KEGG: hsa:1032

String: [9606.ENSP00000377224](#)

Buffer: PBS, pH 7.3, containing 0.02% sodium azide, 50% glycerol.

Concentration: 1 mg/ml

Note: THIS PRODUCT IS FOR RESEARCH USE ONLY. NOT FOR USE IN DIAGNOSTIC, THERAPEUTIC OR COSMETIC PROCEDURES. NOT FOR HUMAN OR ANIMAL CONSUMPTION.

For Reference Only