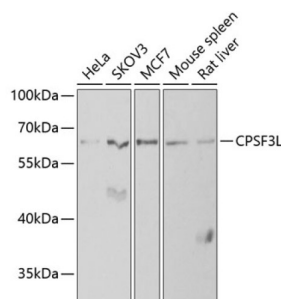
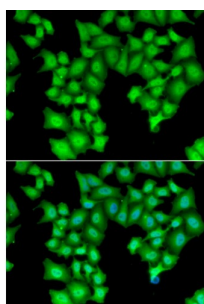


Cleavage And Polyadenylation-Specific Factor 3-Like Protein (CPSF3L) Antibody

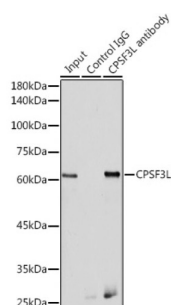
Catalogue No.: abx005038



Western blot analysis of various lysates using CPSF3L Antibody at 1/1000 dilution. Secondary antibody: HRP-conjugated Goat anti-Rabbit IgG (H+L) at 1/10000 dilution. Lysates/proteins: 25 µg per lane. Blocking buffer: 3% nonfat dry milk in TBST. Exposure time: 90s.



Immunofluorescence analysis of HeLa cells using CPSF3L Antibody. Secondary antibody: Cy3-conjugated Goat anti-Rabbit IgG (H+L) at 1/500 dilution. Blue: DAPI for nuclear staining.



Immunoprecipitation analysis of 300 µg extracts of HeLa cells using 3 µg CPSF3L antibody. Western blot was performed from the immunoprecipitate using CPSF3L antibody at a dilution of 1/500.

CPSF3L Antibody is a Rabbit Polyclonal antibody against CPSF3L. The Integrator complex contains at least 12 subunits and associates with the C-terminal domain of RNA polymerase II large subunit (POLR2A; MIM 180660) and mediates the 3-prime end processing of small nuclear RNAs U1 (RNU1; MIM 180680) and U2 (RNU2; MIM 180690). INTS11, or CPSF3L, is the catalytic subunit of the Integrator complex (Baillat et al., 2005).

| | |
|-----------------------------|--|
| Target: | Cleavage And Polyadenylation-Specific Factor 3-Like Protein (CPSF3L) |
| Clonality: | Polyclonal |
| Reactivity: | Human, Mouse, Rat |
| Tested Applications: | ELISA, WB, IF/ICC, IP |
| Host: | Rabbit |

Datasheet

Version: 6.0.0
Revision date: 23 Jun 2025



Recommended dilutions: ELISA: 1 µg/ml, WB: 1/500 - 1/2000, IF/ICC: 1/10 - 1/100, IP: 0.5 µg - 4 µg antibody per 200 µg - 400 µg extracts of whole cells. Optimal dilutions/concentrations should be determined by the end user.

Conjugation: Unconjugated

Immunogen: Recombinant fusion protein containing a sequence corresponding to amino acids 331-600 of human CPSF3L.

Isotype: IgG

Form: Liquid

Purification: Purified by affinity chromatography.

Storage: Aliquot and store at -20°C. Avoid repeated freeze/thaw cycles.

UniProt Primary AC: Q5TA45 ([UniProt](#), [ExPASy](#))

Gene Symbol: INTS11

GeneID: [54973](#)

NCBI Accession: NP_060341.2

KEGG: hsa:54973

String: [9606.ENSP00000445001](#)

Molecular Weight: Calculated MW: 68 kDa
Observed MW: 68 kDa

Buffer: PBS, pH 7.3, containing 0.02% sodium azide, 50% glycerol.

Concentration: 0.5 mg/ml

Note: THIS PRODUCT IS FOR RESEARCH USE ONLY. NOT FOR USE IN DIAGNOSTIC, THERAPEUTIC OR COSMETIC PROCEDURES. NOT FOR HUMAN OR ANIMAL CONSUMPTION.