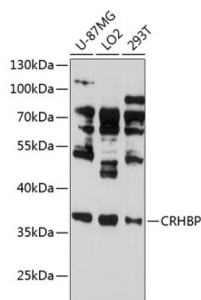


# Corticotropin Releasing Hormone Binding Protein (CRHBP) Antibody

Catalogue No.: abx005040



Western blot analysis of extracts of various cell lines using CRHBP Antibody (1/3000 dilution).

CRHBP Antibody is a Rabbit Polyclonal antibody against CRHBP. Corticotropin-releasing hormone is a potent stimulator of synthesis and secretion of preopiomelanocortin-derived peptides. Although CRH concentrations in the human peripheral circulation are normally low, they increase throughout pregnancy and fall rapidly after parturition. Maternal plasma CRH probably originates from the placenta. Human plasma contains a CRH-binding protein which inactivates CRH and which may prevent inappropriate pituitary-adrenal stimulation in pregnancy.

**Target:** Corticotropin Releasing Hormone Binding Protein (CRHBP)

**Clonality:** Polyclonal

**Reactivity:** Human

**Tested Applications:** WB

**Host:** Rabbit

**Recommended dilutions:** WB: 1/500 - 1/2000. Optimal dilutions/concentrations should be determined by the end user.

**Conjugation:** Unconjugated

**Immunogen:** Recombinant fusion protein corresponding to human CRHBP

**Isotype:** IgG

**Form:** Liquid

**Purification:** Purified by affinity chromatography.

**Storage:** Aliquot and store at -20°C. Avoid repeated freeze/thaw cycles.

**UniProt Primary AC:** P24387 ([UniProt](#), [ExPASy](#))

# Datasheet

Version: 4.0.0

Revision date: 22 Jun 2025



**Gene Symbol:** CRHBP

**GeneID:** [1393](#)

**NCBI Accession:** NP\_001873.2

**KEGG:** hsa:1393

**String:** [9606.ENSP00000274368](#)

**Molecular Weight:** Calculated MW: 36 kDa  
Observed MW: 36 kDa

**Buffer:** PBS, pH 7.3, containing 0.01% thiomersal, 50% glycerol.

**Concentration:** 1 mg/ml

**Note:** THIS PRODUCT IS FOR RESEARCH USE ONLY. NOT FOR USE IN DIAGNOSTIC, THERAPEUTIC OR COSMETIC PROCEDURES. NOT FOR HUMAN OR ANIMAL CONSUMPTION.

For Reference Only