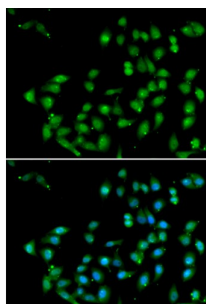


Beta-Catenin-Like Protein 1 (CTNNBL1) Antibody

Catalogue No.: abx005043



Immunofluorescence analysis of U2OS cells using CTNNBL1 Antibody

CTNNBL1 Antibody is a Rabbit Polyclonal antibody against CTNNBL1. The protein encoded by this gene is a component of the pre-mRNA-processing factor 19-cell division cycle 5-like (PRP19-CDC5L) protein complex, which activates pre-mRNA splicing and is an integral part of the spliceosome. The encoded protein is also a nuclear localization sequence binding protein, and binds to activation-induced deaminase and is important for antibody diversification. This gene may also be associated with the development of obesity. Alternative splicing results in multiple transcript variants. A pseudogene of this gene has been defined on the X chromosome.

Target:	Beta-Catenin-Like Protein 1 (CTNNBL1)
Clonality:	Polyclonal
Reactivity:	Human, Mouse, Rat
Tested Applications:	IF/ICC
Host:	Rabbit
Recommended dilutions:	IF/ICC: 1/50 - 1/200. Optimal dilutions/concentrations should be determined by the end user.
Conjugation:	Unconjugated
Immunogen:	Recombinant fusion protein corresponding to human CTNNBL1
Isotype:	IgG
Form:	Liquid
Purification:	Purified by affinity chromatography.
Storage:	Aliquot and store at -20°C. Avoid repeated freeze/thaw cycles.
UniProt Primary AC:	Q8WYA6 (UniProt , ExPASy)

Datasheet

Version: 3.0.0
Revision date: 03 Jun 2025



Gene Symbol: CTNNBL1

GeneID: [56259](#)

NCBI Accession: NP_110517.2

KEGG: hsa:56259

String: [9606.ENSP00000355050](#)

Buffer: PBS, pH 7.3, containing 0.02% sodium azide, 50% glycerol.

Concentration: 1 mg/ml

Note: THIS PRODUCT IS FOR RESEARCH USE ONLY. NOT FOR USE IN DIAGNOSTIC, THERAPEUTIC OR COSMETIC PROCEDURES. NOT FOR HUMAN OR ANIMAL CONSUMPTION.

For Reference Only