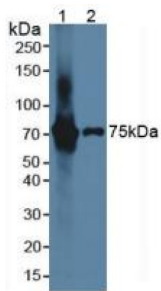
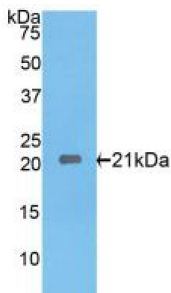


Interleukin 17 Receptor E (IL17RE) Antibody

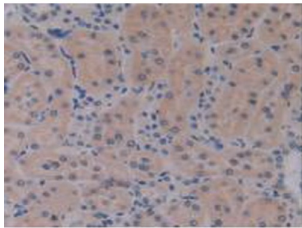
Catalogue No.:abx102769



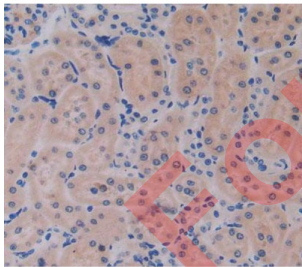
Western blot analysis of (1) Rat Brain Tissue and (2) Mouse Brain Tissue.



Western blot analysis of recombinant Rat IL17RE.



IHC-P analysis of Rat Kidney Tissue, with DAB staining.



IHC-P analysis of kidney tissue, with DAB staining.

Polyclonal Antibody to Interleukin 17 Receptor E (IL17RE).

Target: Interleukin 17 Receptor E (IL17RE)

Clonality: Polyclonal

Reactivity: Rat

Datasheet

Version: 2.0.0

Revision date: 11 Apr 2025



Tested Applications: WB, IHC, IF/ICC

Host: Rabbit

Recommended dilutions: WB: 0.01-2 µg/ml, IHC: 5-20 µg/ml, IF/ICC: 5-20 µg/ml. Optimal dilutions/concentrations should be determined by the end user.

Conjugation: Unconjugated

Immunogen: IL17RE (Asp457-Gly626)

Form: Liquid

Purification: Purified by antigen-specific affinity chromatography, followed by Protein A affinity chromatography.

Storage: Aliquot and store at -20°C. Avoid repeated freeze/thaw cycles.

Buffer: 0.01 M PBS, pH 7.4, containing 0.05% Proclin-300, 50% glycerol.

Note: THIS PRODUCT IS FOR RESEARCH USE ONLY. NOT FOR USE IN DIAGNOSTIC, THERAPEUTIC OR COSMETIC PROCEDURES. NOT FOR HUMAN OR ANIMAL CONSUMPTION.

For Reference Only