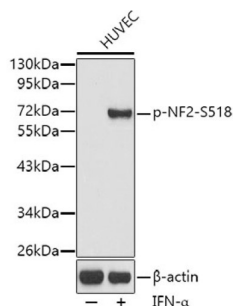


## Merlin Phospho-Ser518 (NF2 pS518) Antibody

Catalogue No.: abx000461



Western blot analysis of lysates from HUVEC cells, using Phospho-NF2-S518 Antibody. Secondary antibody: HRP-conjugated Goat anti-Rabbit IgG (H+L) at 1/10000 dilution. Lysates/proteins: 25 µg per lane. Blocking buffer: 3% BSA.

NF2 (pS518) Antibody is a Rabbit Polyclonal antibody against NF2 (pS518). This gene encodes a protein that is similar to some members of the ERM (ezrin, radixin, moesin) family of proteins that are thought to link cytoskeletal components with proteins in the cell membrane. This gene product has been shown to interact with cell-surface proteins, proteins involved in cytoskeletal dynamics and proteins involved in regulating ion transport. This gene is expressed at high levels during embryonic development; in adults, significant expression is found in Schwann cells, meningeal cells, lens and nerve. Mutations in this gene are associated with neurofibromatosis type II which is characterized by nervous system and skin tumors and ocular abnormalities. Two predominant isoforms and a number of minor isoforms are produced by alternatively spliced transcripts.

**Target:** Merlin Phospho-Ser518 (NF2 pS518)

**Clonality:** Polyclonal

**Target Modification:** Ser518

**Modification:** Phosphorylation

**Reactivity:** Human, Mouse, Rat

**Tested Applications:** WB

**Host:** Rabbit

**Recommended dilutions:** WB: 1/500 - 1/2000. Optimal dilutions/concentrations should be determined by the end user.

**Conjugation:** Unconjugated

**Immunogen:** A phospho specific peptide corresponding to residues surrounding S518 of human NF2

**Isotype:** IgG

**Form:** Liquid

**Purification:** Purified by affinity chromatography.

# Datasheet

Version: 7.0.0  
Revision date: 25 Aug 2025



**Storage:** Aliquot and store at -20°C. Avoid repeated freeze/thaw cycles.

**UniProt Primary AC:** P35240 ([UniProt](#), [ExPASy](#))

**Gene Symbol:** NF2

**GeneID:** [4771](#)

**KEGG:** hsa:4771

**String:** [9606.ENSP00000344666](#)

**Molecular Weight:** Calculated MW: 70 kDa  
Observed MW: 70 kDa

**Buffer:** PBS, pH 7.3, containing 0.02% sodium azide, 50% glycerol.

**Concentration:** 1.0 mg/ml

**Note:** THIS PRODUCT IS FOR RESEARCH USE ONLY. NOT FOR USE IN DIAGNOSTIC, THERAPEUTIC OR COSMETIC PROCEDURES. NOT FOR HUMAN OR ANIMAL CONSUMPTION.

For Reference Only