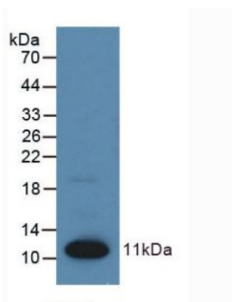
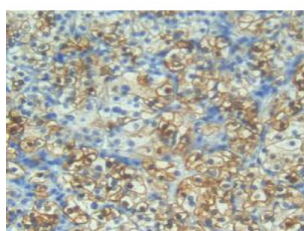


S100A1 Calcium Binding Protein (S100A1) Antibody

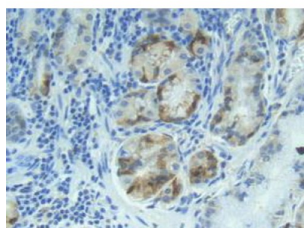
Catalogue No.: abx102934



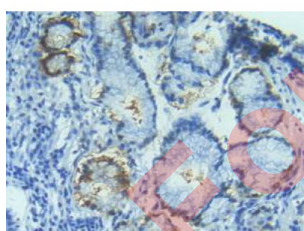
Western blot analysis of recombinant Human S100.



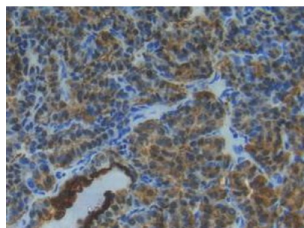
IHC-P analysis of Human Kidney Cancer Tissue, with DAB staining.



IHC-P analysis of Human Stomach Tissue, with DAB staining.



IHC-P analysis of Human Stomach Cancer Tissue, with DAB staining.



IHC-P analysis of Human Thyroid Cancer Tissue, with DAB staining.

Datasheet

Version: 5.0.0
Revision date: 22 Dec 2025



Polyclonal Antibody to Protein S100-A1 (S100A1).

Target:	Protein S100-A1 (S100A1)
Research Area:	Tumor Immunity
Clonality:	Polyclonal
Reactivity:	Human
Tested Applications:	WB, IHC, IF/ICC
Host:	Rabbit
Recommended dilutions:	WB: 1-5 µg/ml, IHC: 5-20 µg/ml, IF/ICC: 5-20 µg/ml. Optimal dilutions/concentrations should be determined by the end user.
Conjugation:	Unconjugated
Immunogen:	S100 (Met1-Ser94)
Form:	Liquid
Purification:	Purified by antigen-specific affinity chromatography, followed by Protein A affinity chromatography.
Storage:	Aliquot and store at -20°C. Avoid repeated freeze/thaw cycles.
UniProt Primary AC:	P23297 (UniProt , ExPASy)
Gene Symbol:	S100A1
GeneID:	6271
KEGG:	hsa:6271
String:	9606.ENSP00000292169
Buffer:	0.01 M PBS, pH 7.4, containing 0.05% Proclin-300, 50% glycerol.
Note:	THIS PRODUCT IS FOR RESEARCH USE ONLY. NOT FOR USE IN DIAGNOSTIC, THERAPEUTIC OR COSMETIC PROCEDURES. NOT FOR HUMAN OR ANIMAL CONSUMPTION.