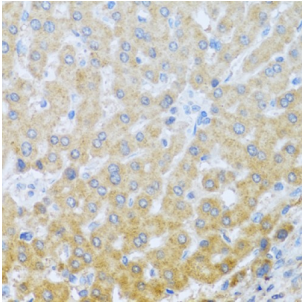
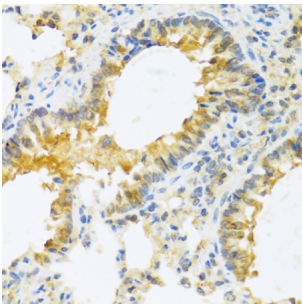


Interleukin 20 (IL20) Antibody

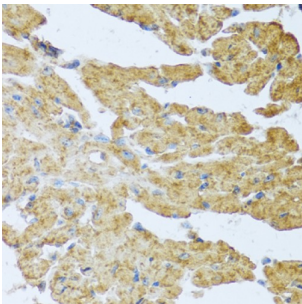
Catalogue No.: abx005082



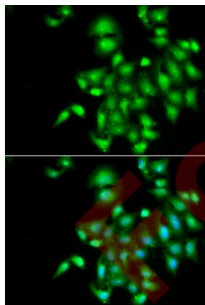
Immunohistochemistry of paraffin-embedded Human liver using IL20 Antibody (1/100 dilution, 40x lens).



Immunohistochemistry of paraffin-embedded Mouse lung using IL20 Antibody (1/100 dilution, 40x lens).



Immunohistochemistry of paraffin-embedded Mouse heart using IL20 Antibody (1/100 dilution, 40x lens).



Immunofluorescence analysis of A549 cells using IL20 Antibody

IL20 Antibody is a Rabbit Polyclonal antibody against IL20. The protein encoded by this gene is a cytokine structurally related to interleukin 10 (IL10). This cytokine has been shown to transduce its signal through signal transducer and activator of transcription 3 (STAT3) in keratinocytes. A specific receptor for this cytokine is found to be expressed in skin and upregulated dramatically in psoriatic skin, suggesting a role for this protein in epidermal function and psoriasis.

Target: Interleukin 20 (IL20)

Clonality: Polyclonal

Datasheet

Version: 4.0.0
Revision date: 11 Aug 2025



Reactivity:	Human, Mouse
Tested Applications:	IHC, IF/ICC
Host:	Rabbit
Recommended dilutions:	IHC-P: 1/50 - 1/100, IF/ICC: 1/50 - 1/100. Not tested in IHC-F. Optimal dilutions/concentrations should be determined by the end user.
Conjugation:	Unconjugated
Immunogen:	Recombinant fusion protein corresponding to human IL20
Isotype:	IgG
Form:	Liquid
Purification:	Purified by affinity chromatography.
Storage:	Aliquot and store at -20°C. Avoid repeated freeze/thaw cycles.
UniProt Primary AC:	Q9NYY1 (UniProt , ExPASy)
Gene Symbol:	IL20
GeneID:	50604
NCBI Accession:	NP_061194.2
String:	9606.ENSP00000356065
Buffer:	PBS, pH 7.3, containing 0.02% sodium azide, 50% glycerol.
Concentration:	1 mg/ml
Note:	THIS PRODUCT IS FOR RESEARCH USE ONLY. NOT FOR USE IN DIAGNOSTIC, THERAPEUTIC OR COSMETIC PROCEDURES. NOT FOR HUMAN OR ANIMAL CONSUMPTION.