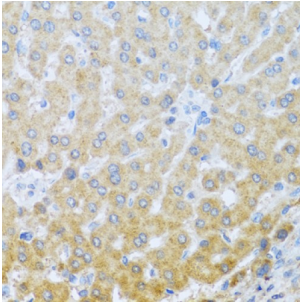
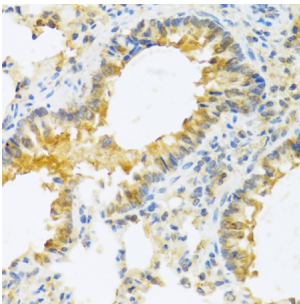


## Interleukin 20 (IL20) Antibody

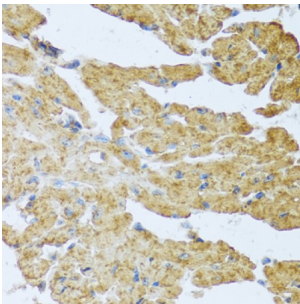
Catalogue No.: abx005082



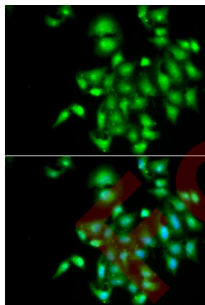
Immunohistochemistry of paraffin-embedded Human liver using IL20 Antibody (1/100 dilution, 40x lens).



Immunohistochemistry of paraffin-embedded Mouse lung using IL20 Antibody (1/100 dilution, 40x lens).



Immunohistochemistry of paraffin-embedded Mouse heart using IL20 Antibody (1/100 dilution, 40x lens).



Immunofluorescence analysis of A549 cells using IL20 Antibody

IL20 Antibody is a Rabbit Polyclonal antibody against IL20. The protein encoded by this gene is a cytokine structurally related to interleukin 10 (IL10). This cytokine has been shown to transduce its signal through signal transducer and activator of transcription 3 (STAT3) in keratinocytes. A specific receptor for this cytokine is found to be expressed in skin and upregulated dramatically in psoriatic skin, suggesting a role for this protein in epidermal function and psoriasis.

**Target:** Interleukin 20 (IL20)

**Clonality:** Polyclonal

# Datasheet

Version: 4.0.0  
Revision date: 05 Mar 2025



<b>Reactivity:</b>	Human, Mouse
<b>Tested Applications:</b>	IHC, IF/ICC
<b>Host:</b>	Rabbit
<b>Recommended dilutions:</b>	IHC-P: 1/50 - 1/100, IF/ICC: 1/50 - 1/100. Not tested in IHC-F. Optimal dilutions/concentrations should be determined by the end user.
<b>Conjugation:</b>	Unconjugated
<b>Immunogen:</b>	Recombinant fusion protein corresponding to human IL20
<b>Isotype:</b>	IgG
<b>Form:</b>	Liquid
<b>Purification:</b>	Purified by affinity chromatography.
<b>Storage:</b>	Aliquot and store at -20°C. Avoid repeated freeze/thaw cycles.
<b>UniProt Primary AC:</b>	Q9NYY1 ( <a href="#">UniProt</a> , <a href="#">ExPASy</a> )
<b>Gene Symbol:</b>	IL20
<b>GeneID:</b>	<a href="#">50604</a>
<b>NCBI Accession:</b>	NP_061194.2
<b>String:</b>	<a href="#">9606.ENSP00000356065</a>
<b>Buffer:</b>	PBS, pH 7.3, containing 0.02% sodium azide, 50% glycerol.
<b>Concentration:</b>	1 mg/ml
<b>Note:</b>	THIS PRODUCT IS FOR RESEARCH USE ONLY. NOT FOR USE IN DIAGNOSTIC, THERAPEUTIC OR COSMETIC PROCEDURES. NOT FOR HUMAN OR ANIMAL CONSUMPTION.