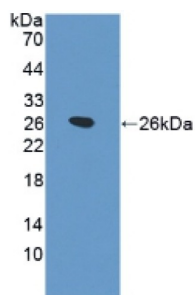
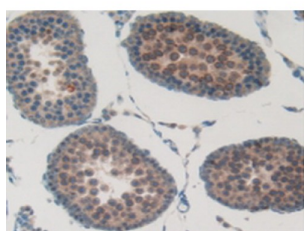


Pulmonary Surfactant-Associated Protein B (SFTPB) Antibody

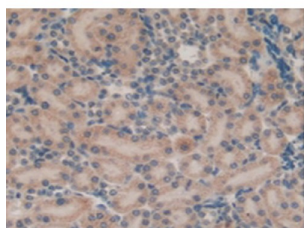
Catalogue No.: abx103203



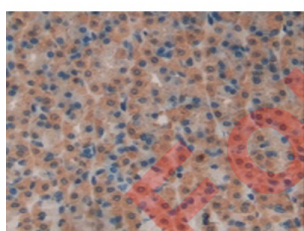
Western blot analysis of recombinant Rat SPB.



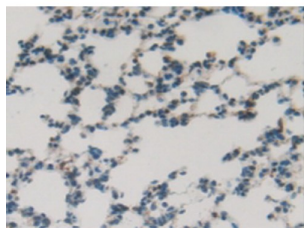
IHC-P analysis of Rat Testis Tissue, with DAB staining.



IHC-P analysis of Rat Kidney Tissue, with DAB staining.



IHC-P analysis of Rat Stomach Tissue, with DAB staining.



IHC-P analysis of Rat Lung Tissue, with DAB staining.

Datasheet

Version: 2.0.0
Revision date: 28 Aug 2025



Polyclonal Antibody to Pulmonary Surfactant-Associated Protein B (SFTPB).

Target:	Pulmonary Surfactant-Associated Protein B (SFTPB)
Clonality:	Polyclonal
Reactivity:	Rat
Tested Applications:	WB, IHC, IF/ICC
Host:	Rabbit
Recommended dilutions:	WB: 0.01-2 µg/ml, IHC: 5-20 µg/ml, IF/ICC: 5-20 µg/ml. Optimal dilutions/concentrations should be determined by the end user.
Conjugation:	Unconjugated
Immunogen:	SPB (Arg111-His329)
Form:	Liquid
Purification:	Purified by antigen-specific affinity chromatography, followed by Protein A affinity chromatography.
Storage:	Aliquot and store at -20°C. Avoid repeated freeze/thaw cycles.
UniProt Primary AC:	P22355 (UniProt , ExPASy)
Gene Symbol:	SFTPB
GeneID:	192155
KEGG:	rno:192155
String:	10116.ENSRNOP00000014505
Buffer:	0.01 M PBS, pH 7.4, containing 0.05% Proclin-300, 50% glycerol.
Note:	THIS PRODUCT IS FOR RESEARCH USE ONLY. NOT FOR USE IN DIAGNOSTIC, THERAPEUTIC OR COSMETIC PROCEDURES. NOT FOR HUMAN OR ANIMAL CONSUMPTION.