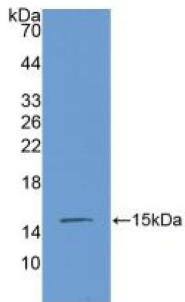
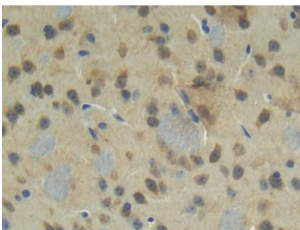


Connective Tissue Growth Factor (CCN2) Antibody

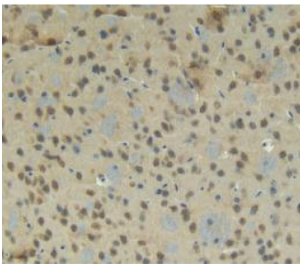
Catalogue No.: abx103228



Western blot analysis of recombinant Mouse CTGF.



IHC-P analysis of Mouse Cerebrum Tissue, with DAB staining.



IHC-P analysis of Mouse Brain Tissue, with DAB staining.

Polyclonal Antibody to Connective Tissue Growth Factor (CCN2).

Target: Connective Tissue Growth Factor (CCN2)

Clonality: Polyclonal

Reactivity: Mouse

Tested Applications: WB, IHC, IF/ICC

Host: Rabbit

Recommended dilutions: WB: 0.01-2 µg/ml, IHC: 5-20 µg/ml, IF/ICC: 5-20 µg/ml. Optimal dilutions/concentrations should be determined by the end user.

Conjugation: Unconjugated

Datasheet

Version: 3.0.0
Revision date: 28 Sep 2025



Immunogen:	CTGF (Leu245-Asp346)
Form:	Liquid
Purification:	Purified by antigen-specific affinity chromatography, followed by Protein A affinity chromatography.
Storage:	Aliquot and store at -20°C. Avoid repeated freeze/thaw cycles.
UniProt Primary AC:	P29268 (UniProt , ExPASy)
KEGG:	mmu:14219
String:	10090.ENSMUSP00000020171
Buffer:	0.01 M PBS, pH 7.4, containing 0.05% Proclin-300, 50% glycerol.
Note:	THIS PRODUCT IS FOR RESEARCH USE ONLY. NOT FOR USE IN DIAGNOSTIC, THERAPEUTIC OR COSMETIC PROCEDURES. NOT FOR HUMAN OR ANIMAL CONSUMPTION.

For Reference Only