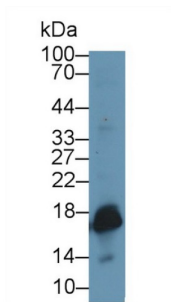
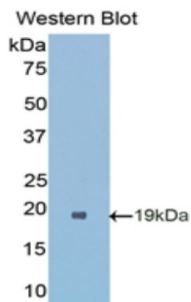


Superoxide Dismutase 1 (SOD1) Antibody

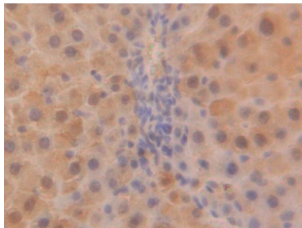
Catalogue No.: abx103322



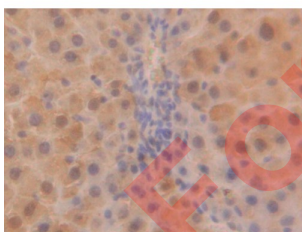
Western blot analysis of Rat Uterus lysate, using Rat SOD1 Antibody (1 µg/ml) and HRP-conjugated Goat Anti-Rabbit antibody ([abx400043](#), 0.2 µg/ml).



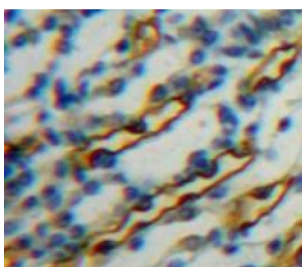
Western blot analysis of the recombinant protein.



IHC-P analysis of Rat Liver Tissue, with DAB staining.



IHC-P analysis of Rat Liver Tissue, with DAB staining.



IHC-P analysis of Kidney tissue, with DAB staining.

Datasheet

Version: 1.0.0
Revision date: 12 Sep 2025



Polyclonal Antibody to Superoxide Dismutase 1, Soluble (SOD1).

Target:	Superoxide Dismutase 1 (SOD1)
Clonality:	Polyclonal
Reactivity:	Rat
Tested Applications:	WB, IHC, IF/ICC
Host:	Rabbit
Recommended dilutions:	WB: 0.01-2 µg/ml, IHC: 5-20 µg/ml, IF/ICC: 5-20 µg/ml. Optimal dilutions/concentrations should be determined by the end user.
Conjugation:	Unconjugated
Immunogen:	SOD1 (Ala2-Gln154)
Form:	Liquid
Purification:	Purified by antigen-specific affinity chromatography, followed by Protein A affinity chromatography.
Storage:	Aliquot and store at -20°C. Avoid repeated freeze/thaw cycles.
UniProt Primary AC:	P07632 (UniProt , ExpASY)
KEGG:	rno:24786
String:	10116.ENSRNOP00000002885
Buffer:	0.01 M PBS, pH 7.4, containing 0.05% Proclin-300, 50% glycerol.
Note:	THIS PRODUCT IS FOR RESEARCH USE ONLY. NOT FOR USE IN DIAGNOSTIC, THERAPEUTIC OR COSMETIC PROCEDURES. NOT FOR HUMAN OR ANIMAL CONSUMPTION.