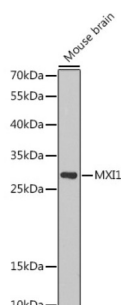


## Max-Interacting Protein 1 (MXI1) Antibody

Catalogue No.: abx005107



Western blot analysis of lysates from Mouse brain, using MXI1 Antibody at 1/1000 dilution. Secondary antibody: HRP-conjugated Goat anti-Rabbit IgG (H+L) at 1/10000 dilution. Lysates/proteins: 25 µg per lane. Blocking buffer: 3% nonfat dry milk in TBST. Exposure time: 90s.

MXI1 Antibody is a Rabbit Polyclonal antibody against MXI1. Expression of the c-myc gene, which produces an oncogenic transcription factor, is tightly regulated in normal cells but is frequently deregulated in human cancers. The protein encoded by this gene is a transcriptional repressor thought to negatively regulate MYC function, and is therefore a potential tumor suppressor. This protein inhibits the transcriptional activity of MYC by competing for MAX, another basic helix-loop-helix protein that binds to MYC and is required for its function. Defects in this gene are frequently found in patients with prostate tumors. Three alternatively spliced transcripts encoding different isoforms have been described. Additional alternatively spliced transcripts may exist but the products of these transcripts have not been verified experimentally.

|                               |  |
|-------------------------------|--|
| <b>Target:</b>                | Max-Interacting Protein 1 (MXI1)   |
| <b>Clonality:</b>             | Polyclonal   |
| <b>Reactivity:</b>            | Human, Mouse, Rat  |
| <b>Tested Applications:</b>   | ELISA, WB  |
| <b>Host:</b>                  | Rabbit   |
| <b>Recommended dilutions:</b> | ELISA: 1 µg/ml, WB: 1/500 - 1/1000. Optimal dilutions/concentrations should be determined by the end user. |
| <b>Conjugation:</b>           | Unconjugated   |
| <b>Immunogen:</b>             | Recombinant protein corresponding to MXI1. The exact sequence is proprietary.                              |
| <b>Isotype:</b>               | IgG  |
| <b>Form:</b>                  | Liquid   |
| <b>Purification:</b>          | Purified by affinity chromatography.   |
| <b>Storage:</b>               | Aliquot and store at -20°C. Avoid repeated freeze/thaw cycles.   |

# Datasheet

Version: 6.0.0  
Revision date: 20 Aug 2025



**UniProt Primary AC:** P50539 ([UniProt](#), [ExPASy](#))

**Gene Symbol:** MXI1

**GeneID:** [4601](#)

**NCBI Accession:** NP\_569157.2

**KEGG:** hsa:4601

**String:** [9606.ENSP00000331152](#)

**Molecular Weight:** Calculated MW: 26 kDa  
Observed MW: 30 kDa

**Buffer:** PBS, pH 7.3, containing 0.02% sodium azide, 50% glycerol.

**Concentration:** > 0.2 mg/ml

**Note:** THIS PRODUCT IS FOR RESEARCH USE ONLY. NOT FOR USE IN DIAGNOSTIC, THERAPEUTIC OR COSMETIC PROCEDURES. NOT FOR HUMAN OR ANIMAL CONSUMPTION.

For Reference Only