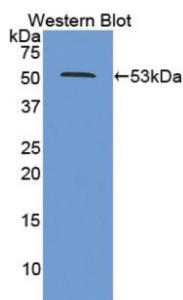
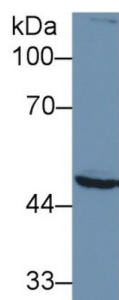


26S Proteasome Regulatory Subunit 7 (PSMC2) Antibody

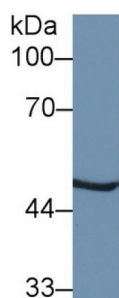
Catalogue No.: abx103498



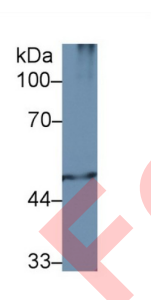
Western blot analysis of recombinant Human PSMC2 Protein.



Western blot analysis of Human U2OS cell lysate, using Human PSMC2 Antibody (2 µg/ml) and HRP-conjugated Goat Anti-Rabbit antibody ([abx400043](#), 0.2 µg/ml).



Western blot analysis of Mouse Liver lysate, using Human PSMC2 Antibody (2 µg/ml) and HRP-conjugated Goat Anti-Rabbit antibody ([abx400043](#), 0.2 µg/ml).



Western blot analysis of Mouse Spleen lysate, using Human PSMC2 Antibody (2 µg/ml) and HRP-conjugated Goat Anti-Rabbit antibody ([abx400043](#), 0.2 µg/ml).

Polyclonal Antibody to 26S Proteasome Regulatory Subunit 7 (PSMC2). The 26S proteasome is a multicatalytic proteinase complex with a highly ordered structure composed of 2 complexes, a 20S core and a 19S regulator. The 20S core is composed of 4 rings of 28 non-identical subunits; 2 rings are composed of 7 alpha subunits and 2 rings are composed of 7 beta subunits. The 19S regulator is composed of a base, which contains 6 ATPase subunits and 2 non-ATPase subunits, and a lid, which contains up to 10 non-ATPase subunits. Proteasomes are distributed throughout eukaryotic cells at a high concentration and cleave peptides in an ATP/ubiquitin-dependent process in a non-lysosomal pathway. An essential function of a modified proteasome, the immunoproteasome, is the processing of class I MHC peptides. This gene encodes one of the ATPase subunits, a member of the triple-A family of ATPases which have a chaperone-like activity. This subunit has been shown to interact with several of the basal transcription factors so, in addition to participation in proteasome functions, this subunit may participate in the regulation of transcription. This subunit may also compete with PSMC3 for binding to the HIV tat protein to regulate the interaction between the viral protein and the transcription complex. Alternative splicing results in multiple transcript

Datasheet

Version: 6.0.0
Revision date: 30 Jul 2025



variants encoding distinct isoforms.

Target:	26S Proteasome Regulatory Subunit 7 (PSMC2)
Clonality:	Polyclonal
Reactivity:	Human
Tested Applications:	WB, IHC, IF/ICC
Host:	Rabbit
Recommended dilutions:	WB: 0.01-2 µg/ml, IHC: 5-20 µg/ml, IF/ICC: 5-20 µg/ml. Optimal dilutions/concentrations should be determined by the end user.
Conjugation:	Unconjugated
Immunogen:	abx068715 Recombinant PSMC2 (Met1-Asn433) expressed in E. coli
Form:	Liquid
Purification:	Purified by antigen-specific affinity chromatography, followed by Protein A affinity chromatography.
Storage:	Aliquot and store at -20°C. Avoid repeated freeze/thaw cycles.
UniProt Primary AC:	P35998 (UniProt , ExPASy)
Gene Symbol:	PSMC2
GeneID:	5701
OMIM:	154365
NCBI Accession:	NP_001191382.1, NM_001204453.1, NP_002794.1, NM_002803.3
HGNC:	9548
KEGG:	hsa:5701
Ensembl:	ENSG00000161057
String:	9606.ENSP00000391211
Buffer:	0.01 M PBS, pH 7.4, containing 0.05% Proclin-300, 50% glycerol.

Datasheet

Version: 6.0.0

Revision date: 30 Jul 2025



Specificity: Cross-reacts with Mouse and Rat PSMC2.

Concentration: 0.46 mg/ml

Note: THIS PRODUCT IS FOR RESEARCH USE ONLY. NOT FOR USE IN DIAGNOSTIC, THERAPEUTIC OR COSMETIC PROCEDURES. NOT FOR HUMAN OR ANIMAL CONSUMPTION.

For Reference Only