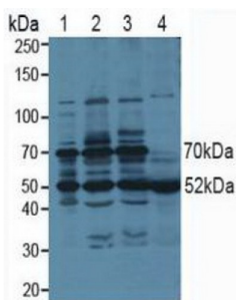
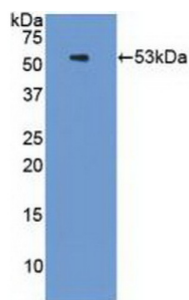


26S Proteasome Regulatory Subunit 6A (PSMC3) Antibody

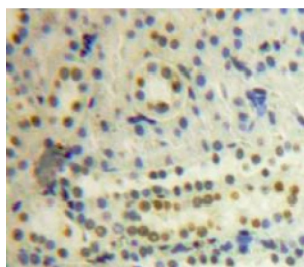
Catalogue No.: abx103499



Western blot analysis of (1) Human 293T cells, (2) Human HeLa cells, (3) Human HepG2 cells and (4) Human Saliva Tissue.



Western blot analysis of recombinant Human PSMC3.



IHC-P analysis of Kidney tissue, with DAB staining.

Polyclonal Antibody to 26S Proteasome Regulatory Subunit 6A (PSMC3). The 26S proteasome is a multicatalytic proteinase complex with a highly ordered structure composed of 2 complexes, a 20S core and a 19S regulator. The 20S core is composed of 4 rings of 28 non-identical subunits; 2 rings are composed of 7 alpha subunits and 2 rings are composed of 7 beta subunits. The 19S regulator is composed of a base, which contains 6 ATPase subunits and 2 non-ATPase subunits, and a lid, which contains up to 10 non-ATPase subunits. Proteasomes are distributed throughout eukaryotic cells at a high concentration and cleave peptides in an ATP/ubiquitin-dependent process in a non-lysosomal pathway. An essential function of a modified proteasome, the immunoproteasome, is the processing of class I MHC peptides. This gene encodes one of the ATPase subunits, a member of the triple-A family of ATPases that have chaperone-like activity. This subunit may compete with PSMC2 for binding to the HIV tat protein to regulate the interaction between the viral protein and the transcription complex. A pseudogene has been identified on chromosome 9.

Target: 26S Proteasome Regulatory Subunit 6A (PSMC3)

Clonality: Polyclonal

Reactivity: Human

Datasheet

Version: 4.0.0
Revision date: 19 Jul 2025



Tested Applications:	WB, IHC, IF/ICC
Host:	Rabbit
Recommended dilutions:	WB: 1-5 µg/ml, IHC: 5-20 µg/ml, IF/ICC: 5-20 µg/ml. Optimal dilutions/concentrations should be determined by the end user.
Conjugation:	Unconjugated
Immunogen:	PSMC3 (Asn2-Ala439)
Form:	Liquid
Purification:	Purified by antigen-specific affinity chromatography, followed by Protein A affinity chromatography.
Storage:	Aliquot and store at -20°C. Avoid repeated freeze/thaw cycles.
UniProt Primary AC:	P17980 (UniProt , ExPASy)
Gene Symbol:	PSMC3
GeneID:	5702
OMIM:	186852
NCBI Accession:	NM_002804
HGNC:	9549
KEGG:	hsa:5702
Ensembl:	ENSG00000165916
String:	9606.ENSP00000481029
Buffer:	0.01 M PBS, pH 7.4, containing 0.05% Proclin-300, 50% glycerol.
Note:	THIS PRODUCT IS FOR RESEARCH USE ONLY. NOT FOR USE IN DIAGNOSTIC, THERAPEUTIC OR COSMETIC PROCEDURES. NOT FOR HUMAN OR ANIMAL CONSUMPTION.