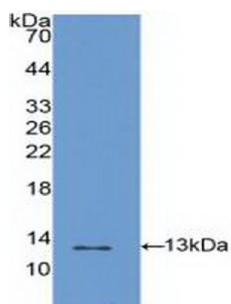
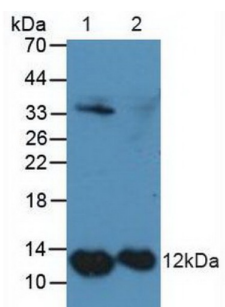


S100 Calcium Binding Protein A4 (S100A4) Antibody

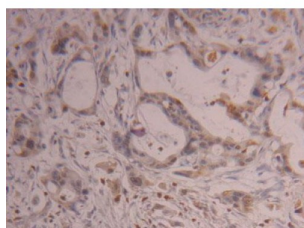
Catalogue No.: abx103518



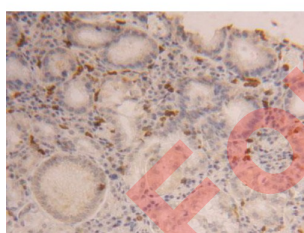
Western blot analysis of recombinant Human S100A4.



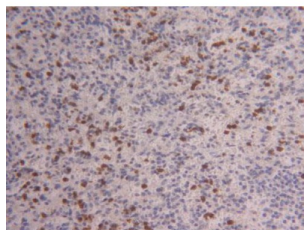
Western blot analysis of (1) Human HeLa cells and (2) Mouse Placenta Tissue.



IHC-P analysis of Human Pancreas Tissue, with DAB staining.



IHC-P analysis of Human Stomach Tissue, with DAB staining.



IHC-P analysis of Human Spleen Tissue, with DAB staining.

Datasheet

Version: 3.0.0
Revision date: 22 Dec 2025



Polyclonal Antibody to S100A4.

Target:	S100 Calcium Binding Protein A4 (S100A4)
Clonality:	Polyclonal
Reactivity:	Human
Tested Applications:	WB, IHC, IF/ICC
Host:	Rabbit
Recommended dilutions:	WB: 0.01-2 µg/ml, IHC: 5-20 µg/ml, IF/ICC: 5-20 µg/ml. Optimal dilutions/concentrations should be determined by the end user.
Conjugation:	Unconjugated
Immunogen:	abx068960 - Recombinant S100A4 (Ala2-Lys101) expressed in E. coli
Form:	Liquid
Purification:	Purified by antigen-specific affinity chromatography, followed by Protein A affinity chromatography.
Storage:	Aliquot and store at -20°C. Avoid repeated freeze/thaw cycles.
UniProt Primary AC:	P26447 (UniProt , ExPASy)
KEGG:	hsa:6275
String:	9606.ENSP00000357705
Buffer:	0.01 M PBS, pH 7.4, containing 0.05% Proclin-300, 50% glycerol.
Specificity:	Cross-reacts with Mouse and Rat S100A4.
Concentration:	1 mg/ml
Note:	THIS PRODUCT IS FOR RESEARCH USE ONLY. NOT FOR USE IN DIAGNOSTIC, THERAPEUTIC OR COSMETIC PROCEDURES. NOT FOR HUMAN OR ANIMAL CONSUMPTION.