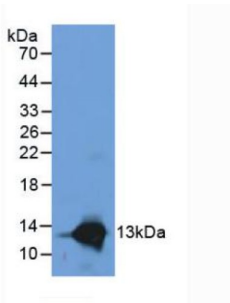
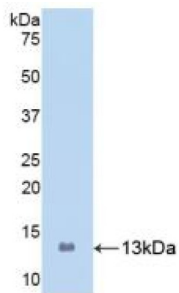


Protein S100-A8 / CAGA (S100A8) Antibody

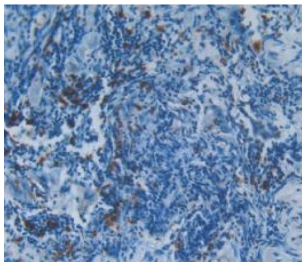
Catalogue No.: abx103532



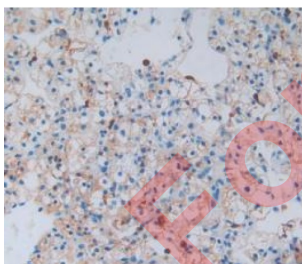
Western blot analysis of (1) Human Liver Tissue and (2) Human Leukocytes Cells.



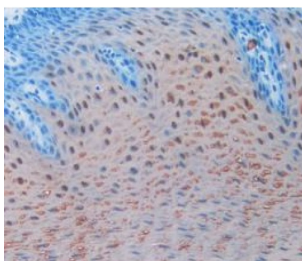
Western blot analysis of recombinant Human S100A8.



IHC-P analysis of Human Lung Cancer Tissue, with DAB staining.



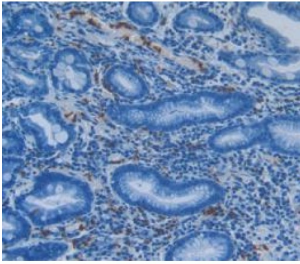
IHC-P analysis of Human Kidney Cancer Tissue, with DAB staining.



IHC-P analysis of Human Esophagus Cancer Tissue, with DAB staining.

Datasheet

Version: 2.0.0
Revision date: 02 Oct 2025



IHC-P analysis of Human Stomach Cancer Tissue, with DAB staining.

Polyclonal Antibody to S100A8.

Target:	Protein S100-A8 / CAGA (S100A8)
Clonality:	Polyclonal
Reactivity:	Human
Tested Applications:	WB, IHC, IF/ICC
Host:	Rabbit
Recommended dilutions:	WB: 0.01-2 µg/ml, IHC: 5-20 µg/ml, IF/ICC: 5-20 µg/ml. Optimal dilutions/concentrations should be determined by the end user.
Conjugation:	Unconjugated
Immunogen:	S100A8 (Met1-Glu93)
Form:	Liquid
Purification:	Purified by antigen-specific affinity chromatography, followed by Protein A affinity chromatography.
Storage:	Aliquot and store at -20°C. Avoid repeated freeze/thaw cycles.
UniProt Primary AC:	P05109 (UniProt , ExPASy)
KEGG:	hsa:6279
String:	9606.ENSP00000357722
Buffer:	0.01 M PBS, pH 7.4, containing 0.05% Proclin-300, 50% glycerol.
Note:	THIS PRODUCT IS FOR RESEARCH USE ONLY. NOT FOR USE IN DIAGNOSTIC, THERAPEUTIC OR COSMETIC PROCEDURES. NOT FOR HUMAN OR ANIMAL CONSUMPTION.