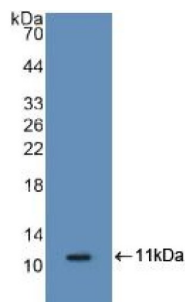
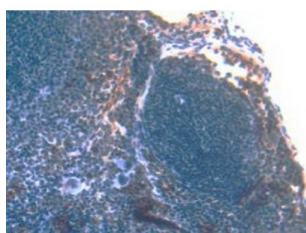


Protein S100-A8 / CAGA (S100A8) Antibody

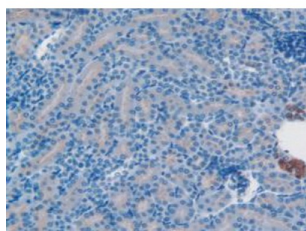
Catalogue No.: abx103535



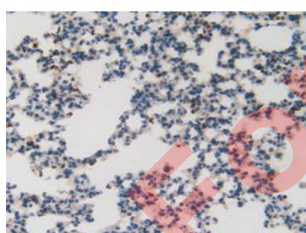
Western blot analysis of recombinant Mouse S100A8.



IHC-P analysis of Mouse Spleen Tissue, with DAB staining.



IHC-P analysis of Mouse Kidney Tissue, with DAB staining.



IHC-P analysis of Mouse Lung Tissue, with DAB staining.

Polyclonal Antibody to S100A8.

Target: Protein S100-A8 / CAGA (S100A8)

Clonality: Polyclonal

Reactivity: Mouse

Datasheet

Version: 5.0.0
Revision date: 27 Jul 2025



Tested Applications: WB, IHC, IF/ICC

Host: Rabbit

Recommended dilutions: WB: 0.01-2 µg/ml, IHC: 5-20 µg/ml, IF/ICC: 5-20 µg/ml. Optimal dilutions/concentrations should be determined by the end user.

Conjugation: Unconjugated

Immunogen: S100A8 (Met1-Glu89)

Form: Liquid

Purification: Purified by antigen-specific affinity chromatography, followed by Protein A affinity chromatography.

Storage: Aliquot and store at -20°C. Avoid repeated freeze/thaw cycles.

UniProt Primary AC: P27005 ([UniProt](#), [ExPASy](#))

KEGG: mmu:20201

String: [10090.ENSMUSP00000064385](#)

Buffer: 0.01 M PBS, pH 7.4, containing 0.05% Proclin-300, 50% glycerol.

Note: THIS PRODUCT IS FOR RESEARCH USE ONLY. NOT FOR USE IN DIAGNOSTIC, THERAPEUTIC OR COSMETIC PROCEDURES. NOT FOR HUMAN OR ANIMAL CONSUMPTION.