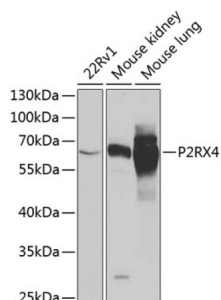
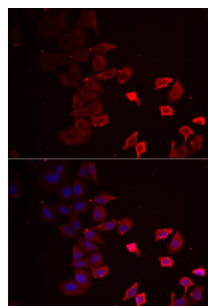


Purinergic Receptor P2X 4 (P2RX4) Antibody

Catalogue No.: abx005122



Western blot analysis of extracts of various cell lines using P2RX4 Antibody (1/1000 dilution).



Immunofluorescence analysis of MCF7 cells using P2RX4 Antibody

P2RX4 Antibody is a Rabbit Polyclonal antibody against P2RX4. The product of this gene belongs to the family of purinoceptors for ATP. This receptor functions as a ligand-gated ion channel with high calcium permeability. The main pharmacological distinction between the members of the purinoceptor family is the relative sensitivity to the antagonists suramin and PPADS. The product of this gene has the lowest sensitivity for these antagonists. Multiple alternatively spliced transcript variants, some protein-coding and some not protein-coding, have been found for this gene.

Target: Purinergic Receptor P2X 4 (P2RX4)

Clonality: Polyclonal

Reactivity: Human, Mouse

Tested Applications: WB, IF/ICC

Host: Rabbit

Recommended dilutions: WB: 1/500 - 1/2000, IF/ICC: 1/10 - 1/100. Optimal dilutions/concentrations should be determined by the end user.

Conjugation: Unconjugated

Immunogen: Recombinant fusion protein corresponding to human P2RX4

Isotype: IgG

Datasheet

Version: 6.0.0
Revision date: 13 Aug 2025



Form:	Liquid
Purification:	Purified by affinity chromatography.
Storage:	Aliquot and store at -20°C. Avoid repeated freeze/thaw cycles.
UniProt Primary AC:	Q99571 (UniProt , ExPASy)
Gene Symbol:	P2RX4
GeneID:	5025
NCBI Accession:	NP_002551.2
KEGG:	hsa:5025
String:	9606.ENSP00000353032
Molecular Weight:	Calculated MW: 40 kDa/43 kDa/45 kDa Observed MW: 62 kDa
Buffer:	PBS, pH 7.3, containing 0.02% sodium azide, 50% glycerol.
Concentration:	1 mg/ml
Note:	THIS PRODUCT IS FOR RESEARCH USE ONLY. NOT FOR USE IN DIAGNOSTIC, THERAPEUTIC OR COSMETIC PROCEDURES. NOT FOR HUMAN OR ANIMAL CONSUMPTION.