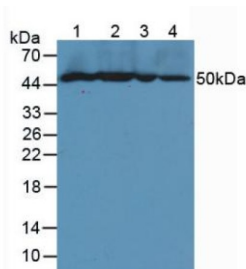
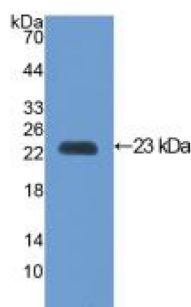


## Vascular Cell Adhesion Molecule 1 (VCAM1) Antibody

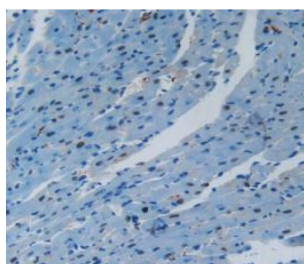
Catalogue No.: abx103676



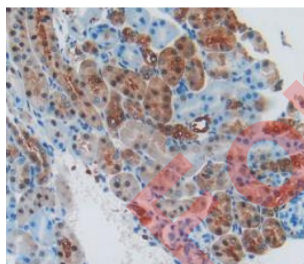
Western blot analysis of (1) Mouse Spleen Tissue, (2) Mouse Kidney Tissue, (3) Mouse Placenta Tissue and (4) Human HeLa cells.



Western blot analysis of recombinant Mouse VCAM1.



IHC-P analysis of Mouse Heart Tissue, with DAB staining.



IHC-P analysis of Mouse Kidney Tissue, with DAB staining.

Polyclonal Antibody to Vascular Cell Adhesion Molecule 1 / CD106 (VCAM1).

**Target:** Vascular Cell Adhesion Molecule 1 (VCAM1)

**Clonality:** Polyclonal

**Reactivity:** Mouse

# Datasheet

Version: 3.0.0  
Revision date: 02 Sep 2025



**Tested Applications:** WB, IHC, IF/ICC

**Host:** Rabbit

**Recommended dilutions:** WB: 0.01-2 µg/ml, IHC: 5-20 µg/ml, IF/ICC: 5-20 µg/ml. Optimal dilutions/concentrations should be determined by the end user.

**Conjugation:** Unconjugated

**Immunogen:** VCAM1 (Pro116-Gln309)

**Form:** Liquid

**Purification:** Purified by antigen-specific affinity chromatography, followed by Protein A affinity chromatography.

**Storage:** Aliquot and store at -20°C. Avoid repeated freeze/thaw cycles.

**UniProt Primary AC:** P29533 ([UniProt](#), [ExPASy](#))

**Gene Symbol:** VCAM1

**String:** [10090.ENSMUSP00000029574](#)

**Buffer:** 0.01 M PBS, pH 7.4, containing 0.05% Proclin-300, 50% glycerol.

**Note:** THIS PRODUCT IS FOR RESEARCH USE ONLY. NOT FOR USE IN DIAGNOSTIC, THERAPEUTIC OR COSMETIC PROCEDURES. NOT FOR HUMAN OR ANIMAL CONSUMPTION.