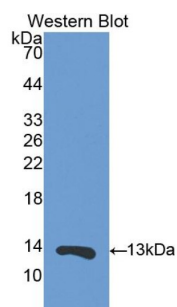


S100 Calcium Binding Protein A11 (S100A11) Antibody

Catalogue No.: abx103774



Western blot analysis of the recombinant protein.

Polyclonal Antibody to S100A11.

Target:	S100 Calcium Binding Protein A11 (S100A11)
Clonality:	Polyclonal
Reactivity:	Rabbit
Tested Applications:	WB, IHC, IF/ICC
Host:	Guinea pig
Recommended dilutions:	WB: 0.01-2 µg/ml, IHC: 5-20 µg/ml, IF/ICC: 5-20 µg/ml. Optimal dilutions/concentrations should be determined by the end user.
Conjugation:	Unconjugated
Immunogen:	S100A11 (Met1-Phe102).
Form:	Liquid
Purification:	Purified by antigen-specific affinity chromatography , followed by Protein A affinity chromatography.
Storage:	Aliquot and store at -20°C. Avoid repeated freeze/thaw cycles.
Buffer:	0.01 M PBS, pH 7.4, containing 0.05% Proclin-300, 50% glycerol.
Note:	THIS PRODUCT IS FOR RESEARCH USE ONLY. NOT FOR USE IN DIAGNOSTIC, THERAPEUTIC OR COSMETIC PROCEDURES. NOT FOR HUMAN OR ANIMAL CONSUMPTION.