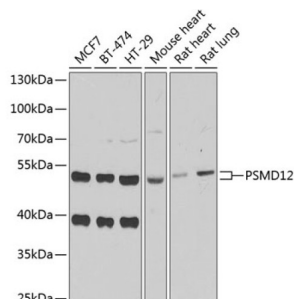


26S Proteasome Non-ATPase Regulatory Subunit 12 (PSMD12) Antibody

Catalogue No.: abx005145



Western blot analysis of various lysates using PSMD12 Antibody at 1/1000 dilution. Secondary antibody: HRP-conjugated Goat anti-Rabbit IgG (H+L) at 1/10000 dilution. Lysates/proteins: 25 µg per lane. Blocking buffer: 3% nonfat dry milk in TBST. Exposure time: 90s.

26S Proteasome Non-ATPase Regulatory Subunit 12 (PSMD12) Antibody is a Rabbit Polyclonal antibody against 26S Proteasome Non-ATPase Regulatory Subunit 12 (PSMD12). The 26S proteasome is a multicatalytic proteinase complex with a highly ordered structure composed of 2 complexes, a 20S core and a 19S regulator. The 20S core is composed of 4 rings of 28 non-identical subunits; 2 rings are composed of 7 alpha subunits and 2 rings are composed of 7 beta subunits. The 19S regulator is composed of a base, which contains 6 ATPase subunits and 2 non-ATPase subunits, and a lid, which contains up to 10 non-ATPase subunits. Proteasomes are distributed throughout eukaryotic cells at a high concentration and cleave peptides in an ATP/ubiquitin-dependent process in a non-lysosomal pathway. An essential function of a modified proteasome, the immunoproteasome, is the processing of class I MHC peptides. This gene encodes a non-ATPase subunit of the 19S regulator. A pseudogene has been identified on chromosome 3.

Target:	26S Proteasome Non-ATPase Regulatory Subunit 12 (PSMD12)
Clonality:	Polyclonal
Reactivity:	Human, Mouse, Rat
Tested Applications:	ELISA, WB
Host:	Rabbit
Recommended dilutions:	ELISA: 1 µg/ml, WB: 1/500 - 1/2000. Optimal dilutions/concentrations should be determined by the end user.
Conjugation:	Unconjugated
Immunogen:	Recombinant protein corresponding to PSMD12. The exact sequence is proprietary.
Isotype:	IgG
Form:	Liquid
Purification:	Purified by affinity chromatography.

Datasheet

Version: 5.0.0
Revision date: 16 Jul 2025



Storage:	Aliquot and store at -20°C. Avoid repeated freeze/thaw cycles.
UniProt Primary AC:	O00232 (UniProt , ExPASy)
Gene Symbol:	PSMD12
GeneID:	5718
OMIM:	604450
NCBI Accession:	NP_001303270.1, NM_001316341.1, NP_002807.1, NM_002816.4
HGNC:	9557
KEGG:	hsa:5718
Ensembl:	ENSG00000197170
String:	9606.ENSP00000348442
Molecular Weight:	Calculated MW: 53 kDa Observed MW: 53 kDa
Buffer:	PBS, pH 7.3, containing 0.02% sodium azide, 50% glycerol.
Concentration:	> 0.2 mg/ml
Note:	THIS PRODUCT IS FOR RESEARCH USE ONLY. NOT FOR USE IN DIAGNOSTIC, THERAPEUTIC OR COSMETIC PROCEDURES. NOT FOR HUMAN OR ANIMAL CONSUMPTION.