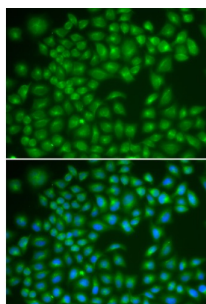


Ras-Related Protein Rab-4A (RAB4A) Antibody

Catalogue No.: abx005149



Immunofluorescence analysis of MCF-7 cells using RAB4A Antibody

RAB4A Antibody is a Rabbit Polyclonal antibody against RAB4A. This gene is a member of the largest group in the Ras superfamily of small GTPases, which regulate membrane trafficking. The encoded protein is associated with early endosomes and is involved in their sorting and recycling. The protein also plays a role in regulating the recycling of receptors from endosomes to the plasma membrane. Alternatively spliced transcript variants have been observed for this gene.

Target: Ras-Related Protein Rab-4A (RAB4A)

Clonality: Polyclonal

Reactivity: Human

Tested Applications: IF/ICC

Host: Rabbit

Recommended dilutions: IF/ICC: 1/50 - 1/200. Optimal dilutions/concentrations should be determined by the end user.

Conjugation: Unconjugated

Immunogen: Recombinant fusion protein corresponding to human RAB4A

Isotype: IgG

Form: Liquid

Purification: Purified by affinity chromatography.

Storage: Aliquot and store at -20°C. Avoid repeated freeze/thaw cycles.

UniProt Primary AC: P20338 ([UniProt](#), [ExPASy](#))

Gene Symbol: RAB4A

Datasheet

Version: 4.0.0

Revision date: 27 Aug 2025



GeneID: [5867](#)

OMIM: [179511](#)

NCBI Accession: NP_004569.2

HGNC: 9781

KEGG: hsa:5867

Ensembl: ENSG00000168118

String: [9606.ENSP00000355651](#)

Buffer: PBS, pH 7.3, containing 0.02% sodium azide, 50% glycerol.

Concentration: 1 mg/ml

Note: THIS PRODUCT IS FOR RESEARCH USE ONLY. NOT FOR USE IN DIAGNOSTIC, THERAPEUTIC OR COSMETIC PROCEDURES. NOT FOR HUMAN OR ANIMAL CONSUMPTION.

For Reference Only