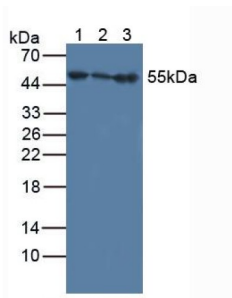
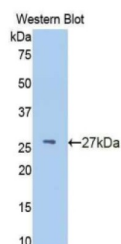


Interferon Alpha/Beta Receptor 1 (IFNa/bR1) Antibody

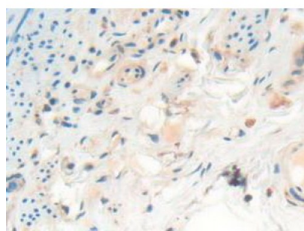
Catalogue No.: abx103835



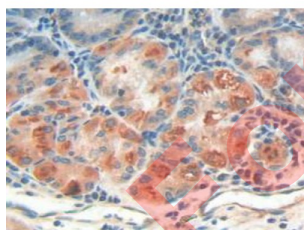
Western blot analysis of (1) Human Liver Tissue, (2) Human HeLa cells and (3) Rat Brain Tissue.



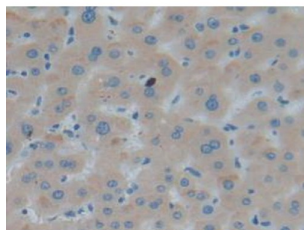
Western blot analysis of recombinant Human IFNa/bR1.



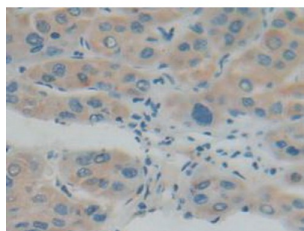
IHC-P analysis of Human Rectum Tissue, with DAB staining.



IHC-P analysis of Human Stomach Tissue, with DAB staining.



IHC-P analysis of Human Liver Tissue, with DAB staining.



IHC-P analysis of Human Liver Cancer Tissue, with DAB staining.

Polyclonal Antibody to Interferon Alpha/Beta Receptor 1 (IFNa/bR1).

Target: Interferon Alpha/Beta Receptor 1 (IFNa/bR1)

Clonality: Polyclonal

Reactivity: Human

Tested Applications: WB, IHC, IF/ICC

Host: Rabbit

Recommended dilutions: WB: 1-5 µg/ml, IHC: 5-20 µg/ml, IF/ICC: 5-20 µg/ml. Optimal dilutions/concentrations should be determined by the end user.

Conjugation: Unconjugated

Immunogen: IFNa/bR1 (Lys28-Asn227)

Form: Liquid

Purification: Purified by antigen-specific affinity chromatography, followed by Protein A affinity chromatography.

Storage: Aliquot and store at -20°C. Avoid repeated freeze/thaw cycles.

Buffer: 0.01 M PBS, pH 7.4, containing 0.05% Proclin-300, 50% glycerol.

Note: THIS PRODUCT IS FOR RESEARCH USE ONLY. NOT FOR USE IN DIAGNOSTIC, THERAPEUTIC OR COSMETIC PROCEDURES. NOT FOR HUMAN OR ANIMAL CONSUMPTION.