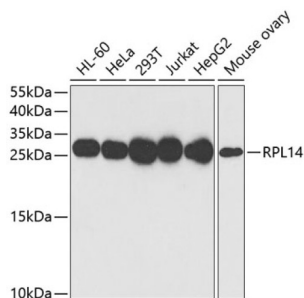
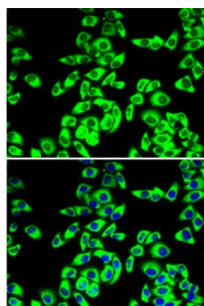


Ribosomal Protein L14 (RPL14) Antibody

Catalogue No.: abx005157



Western blot analysis of various lysates using RPL14 Antibody at 1/1000 dilution. Secondary antibody: HRP-conjugated Goat anti-Rabbit IgG (H+L) at 1/10000 dilution. Lysates/proteins: 25 µg per lane. Blocking buffer: 3% nonfat dry milk in TBST. Exposure time: 10s.



Immunofluorescence analysis of MCF7 cells using RPL14 Antibody. Secondary antibody: Cy3-conjugated Goat anti-Rabbit IgG (H+L) at 1/500 dilution. Blue: DAPI for nuclear staining.

RPL14 Antibody is a Rabbit Polyclonal antibody against RPL14. Ribosomes, the organelles that catalyze protein synthesis, consist of a small 40S subunit and a large 60S subunit. Together these subunits are composed of 4 RNA species and approximately 80 structurally distinct proteins. This gene encodes a ribosomal protein that is a component of the 60S subunit. The protein belongs to the L14E family of ribosomal proteins. It contains a basic region-leucine zipper (bZIP)-like domain. The protein is located in the cytoplasm. This gene contains a trinucleotide (GCT) repeat tract whose length is highly polymorphic; these triplet repeats result in a stretch of alanine residues in the encoded protein. Transcript variants utilizing alternative polyA signals and alternative 5'-terminal exons exist but all encode the same protein. As is typical for genes encoding ribosomal proteins, there are multiple processed pseudogenes of this gene dispersed through the genome.

Target: Ribosomal Protein L14 (RPL14)

Clonality: Polyclonal

Reactivity: Human, Mouse, Rat

Tested Applications: ELISA, WB, IF/ICC

Host: Rabbit

Recommended dilutions: ELISA: 1 µg/ml, WB: 1/500 - 1/2000, IF/ICC: 1/50 - 1/200. Optimal dilutions/concentrations should be determined by the end user.

Conjugation: Unconjugated

Immunogen: Recombinant protein corresponding to RPL14. The exact sequence is proprietary.

Datasheet

Version: 5.0.0
Revision date: 02 Oct 2025



| | |
|---------------------|--|
| Isotype: | IgG |
| Form: | Liquid |
| Purification: | Purified by affinity chromatography. |
| Storage: | Aliquot and store at -20°C. Avoid repeated freeze/thaw cycles. |
| UniProt Primary AC: | P50914 (UniProt , ExPASy) |
| Gene Symbol: | RPL14 |
| GeneID: | 9045 |
| NCBI Accession: | NP_003964.3 |
| KEGG: | hsa:9045 |
| String: | 9606.ENSP00000379506 |
| Molecular Weight: | Calculated MW: 23 kDa Observed MW: 26 kDa |
| Buffer: | PBS, pH 7.3, containing 0.02% sodium azide, 50% glycerol. |
| Concentration: | > 0.2 mg/ml |
| Note: | THIS PRODUCT IS FOR RESEARCH USE ONLY. NOT FOR USE IN DIAGNOSTIC, THERAPEUTIC OR COSMETIC PROCEDURES. NOT FOR HUMAN OR ANIMAL CONSUMPTION. |