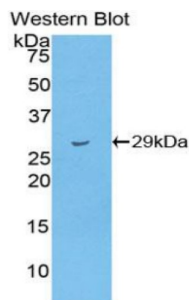
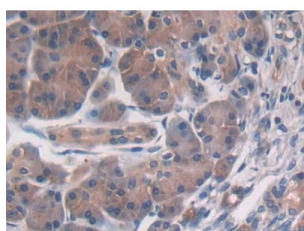


26S Proteasome Non-ATPase Regulatory Subunit 2 (PSMD2) Antibody

Catalogue No.: abx103940



Western blot analysis of the recombinant protein.



IHC-P analysis of Human Pancreas Tissue, with DAB staining.

Polyclonal Antibody to Proteasome 26S Subunit, Non ATPase 2 (PSMD2). The 26S proteasome is a multicatalytic proteinase complex with a highly ordered structure composed of 2 complexes, a 20S core and a 19S regulator. The 20S core is composed of 4 rings of 28 non-identical subunits; 2 rings are composed of 7 alpha subunits and 2 rings are composed of 7 beta subunits. The 19S regulator is composed of a base, which contains 6 ATPase subunits and 2 non-ATPase subunits, and a lid, which contains up to 10 non-ATPase subunits. Proteasomes are distributed throughout eukaryotic cells at a high concentration and cleave peptides in an ATP/ubiquitin-dependent process in a non-lysosomal pathway. An essential function of a modified proteasome, the immunoproteasome, is the processing of class I MHC peptides. This gene encodes one of the non-ATPase subunits of the 19S regulator lid. In addition to participation in proteasome function, this subunit may also participate in the TNF signalling pathway since it interacts with the tumor necrosis factor type 1 receptor. A pseudogene has been identified on chromosome 1. Alternative splicing results in multiple transcript variants of this gene.

Target: 26S Proteasome Non-ATPase Regulatory Subunit 2 (PSMD2)

Clonality: Polyclonal

Reactivity: Human

Tested Applications: WB, IHC, IF/ICC

Host: Rabbit

Recommended dilutions: WB: 0.01-2 µg/ml, IHC: 5-20 µg/ml, IF/ICC: 5-20 µg/ml. Optimal dilutions/concentrations should be determined by the end user.

Conjugation: Unconjugated

Datasheet

Version: 4.0.0
Revision date: 08 Sep 2025



Immunogen:	PSMD2 (Asp645-Val872)
Form:	Liquid
Purification:	Purified by antigen-specific affinity chromatography, followed by Protein A affinity chromatography.
Storage:	Aliquot and store at -20°C. Avoid repeated freeze/thaw cycles.
UniProt Primary AC:	Q13200 (UniProt , ExPASy)
Gene Symbol:	PSMD2
GeneID:	5708
OMIM:	606223
NCBI Accession:	NP_001265637.1, NM_001278708.1, NP_001265638.1, NM_001278709.1, NP_002799.3, NM_002808.4
HGNC:	9559
KEGG:	hsa:5708
Ensembl:	ENSG00000175166
String:	9606.ENSP00000310129
Buffer:	0.01 M PBS, pH 7.4, containing 0.05% Proclin-300, 50% glycerol.
Note:	THIS PRODUCT IS FOR RESEARCH USE ONLY. NOT FOR USE IN DIAGNOSTIC, THERAPEUTIC OR COSMETIC PROCEDURES. NOT FOR HUMAN OR ANIMAL CONSUMPTION.