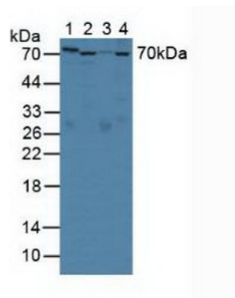
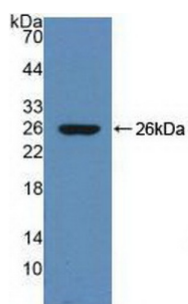


Protein Z Dependent Protease Inhibitor (ZPI) Antibody

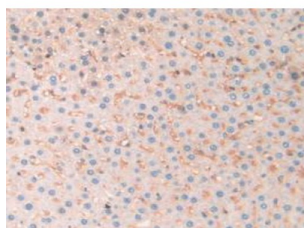
Catalogue No.: abx103943



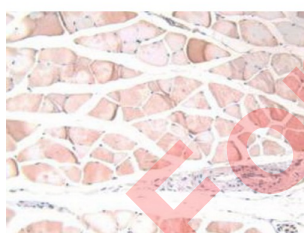
Western blot analysis of (1) Rat Serum, (2) Rat Liver Tissue, (3) Rat Placenta Tissue and (4) Mouse Liver Tissue.



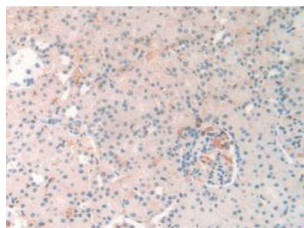
Western blot analysis of recombinant Rat ZPI.



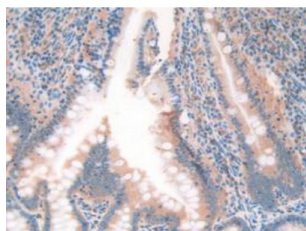
IHC-P analysis of Rat Liver Tissue, with DAB staining.



IHC-P analysis of Rat Skeletal Muscle Tissue, with DAB staining.



IHC-P analysis of Rat Kidney Tissue, with DAB staining.



IHC-P analysis of Rat Intestine Tissue, with DAB staining.

Polyclonal Antibody to Protein Z Dependent Protease Inhibitor (ZPI).

Target:	Protein Z Dependent Protease Inhibitor (ZPI)
Clonality:	Polyclonal
Reactivity:	Rat
Tested Applications:	WB, IHC, IF/ICC
Host:	Rabbit
Recommended dilutions:	WB: 0.01-2 µg/ml, IHC: 5-20 µg/ml, IF/ICC: 5-20 µg/ml. Optimal dilutions/concentrations should be determined by the end user.
Conjugation:	Unconjugated
Immunogen:	ZPI (His278-Leu425)
Form:	Liquid
Purification:	Purified by antigen-specific affinity chromatography, followed by Protein A affinity chromatography.
Storage:	Aliquot and store at -20°C. Avoid repeated freeze/thaw cycles.
Buffer:	0.01 M PBS, pH 7.4, containing 0.05% Proclin-300, 50% glycerol.
Note:	THIS PRODUCT IS FOR RESEARCH USE ONLY. NOT FOR USE IN DIAGNOSTIC, THERAPEUTIC OR COSMETIC PROCEDURES. NOT FOR HUMAN OR ANIMAL CONSUMPTION.