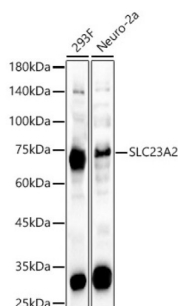


Solute Carrier Family 23 Member 2 (SLC23A2) Antibody

Catalogue No.: abx005171



Western blot analysis of various lysates, using SLC23A2 Antibody at 1/2000 dilution.
Secondary antibody: HRP-conjugated Goat anti-Rabbit IgG (H+L) at 1/10000 dilution.
Lysates/proteins: 25 µg per lane. Blocking buffer: 3% nonfat dry milk in TBST. Exposure time: 90s.

SLC23A2 Antibody is a Rabbit Polyclonal antibody against SLC23A2. The absorption of vitamin C into the body and its distribution to organs requires two sodium-dependent vitamin C transporters. This gene encodes one of the two required transporters and the encoded protein accounts for tissue-specific uptake of vitamin C. Previously, this gene had an official symbol of SLC23A1.

Target:	Solute Carrier Family 23 Member 2 (SLC23A2)
Clonality:	Polyclonal
Reactivity:	Human, Mouse
Tested Applications:	ELISA, WB
Host:	Rabbit
Recommended dilutions:	ELISA: 1 µg/ml, WB: 1/1000 - 1/5000. Optimal dilutions/concentrations should be determined by the end user.
Conjugation:	Unconjugated
Immunogen:	Recombinant fusion protein containing a sequence corresponding to amino acids 1-98 of human SLC23A2.
Isotype:	IgG
Form:	Liquid
Purification:	Purified by affinity chromatography.
Storage:	Aliquot and store at -20°C. Avoid repeated freeze/thaw cycles.
UniProt Primary AC:	Q9UGH3 (UniProt , ExPASy)
Gene Symbol:	SLC23A2

Datasheet

Version: 4.0.0

Revision date: 09 Sep 2025



GeneID: [9962](#)

NCBI Accession: NP_005107.4

String: [9606.ENSP00000368637](#)

Molecular Weight: Calculated MW: 70 kDa
Observed MW: 70 kDa

Buffer: PBS, pH 7.3, containing 0.05% Proclin-300, 50% glycerol.

Concentration: > 0.2 mg/ml

Note: THIS PRODUCT IS FOR RESEARCH USE ONLY. NOT FOR USE IN DIAGNOSTIC, THERAPEUTIC OR COSMETIC PROCEDURES. NOT FOR HUMAN OR ANIMAL CONSUMPTION.

For Reference Only