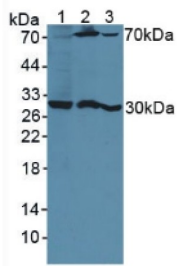
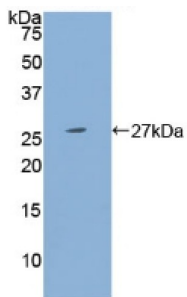


Pregnancy Specific Beta-1-Glycoprotein 1 (PSG1) Antibody

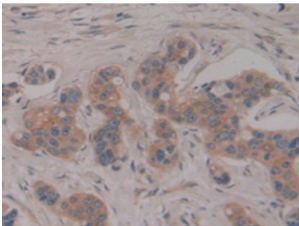
Catalogue No.: abx104138



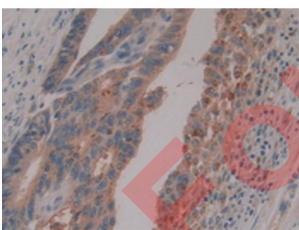
Western blot analysis of (1) Human HeLa cells, (2) Mouse Kidney Tissue and (3) Mouse Breast Cancer Tissue.



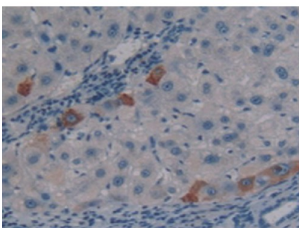
Western blot analysis of recombinant Human PSG1.



IHC-P analysis of Human Breast Cancer Tissue, with DAB staining.



IHC-P analysis of Human Rectum Cancer Tissue, with DAB staining.



IHC-P analysis of Human Liver Tissue, with DAB staining.

Datasheet

Version: 4.0.0
Revision date: 01 Mar 2025



Polyclonal Antibody to Pregnancy Specific Beta-1-Glycoprotein 1 (PSG1).

Target:	Pregnancy Specific Beta-1-Glycoprotein 1 (PSG1)
Clonality:	Polyclonal
Reactivity:	Human
Tested Applications:	WB, IHC, IF/ICC
Host:	Rabbit
Recommended dilutions:	WB: 0.01-5 µg/ml, IHC: 5-20 µg/ml, IF/ICC: 5-20 µg/ml. Optimal dilutions/concentrations should be determined by the end user.
Conjugation:	Unconjugated
Immunogen:	PSG1 (Leu202-Thr401)
Form:	Liquid
Purification:	Purified by antigen-specific affinity chromatography, followed by Protein A affinity chromatography.
Storage:	Aliquot and store at -20°C. Avoid repeated freeze/thaw cycles.
UniProt Primary AC:	P11464 (UniProt , ExpASY)
Gene Symbol:	PSG1
GeneID:	5669
OMIM:	176390
HGNC:	9514
KEGG:	hsa:5669
Buffer:	0.01 M PBS, pH 7.4, containing 0.05% Proclin-300, 50% glycerol.
Note:	THIS PRODUCT IS FOR RESEARCH USE ONLY. NOT FOR USE IN DIAGNOSTIC, THERAPEUTIC OR COSMETIC PROCEDURES. NOT FOR HUMAN OR ANIMAL CONSUMPTION.