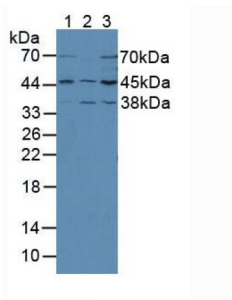
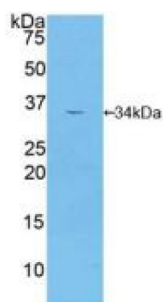


## Mitogen-Activated Protein Kinase Kinase 2 (MAP2K2) Antibody

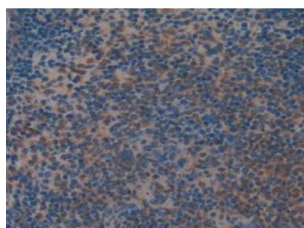
Catalogue No.: abx104292



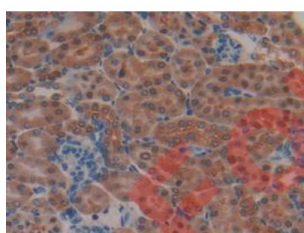
Western blot analysis of (1) Mouse Brain Tissue, (2) Mouse Kidney Tissue and (3) Rat Brain Tissue.



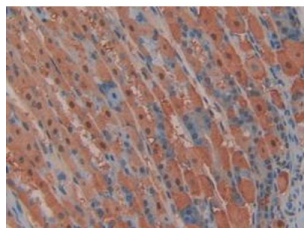
Western blot analysis of recombinant Mouse MAP2K2.



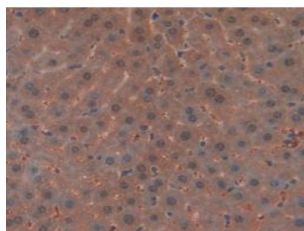
IHC-P analysis of Mouse Spleen Tissue, with DAB staining.



IHC-P analysis of Mouse Kidney Tissue, with DAB staining.



IHC-P analysis of Mouse Stomach Tissue, with DAB staining.



IHC-P analysis of Mouse Liver Tissue, with DAB staining.

Polyclonal Antibody to Mitogen Activated Protein Kinase Kinase 2 (MAP2K2).

|                               |  |
|-------------------------------|--|
| <b>Target:</b>                | Mitogen-Activated Protein Kinase Kinase 2 (MAP2K2)   |
| <b>Clonality:</b>             | Polyclonal   |
| <b>Reactivity:</b>            | Mouse  |
| <b>Tested Applications:</b>   | WB, IHC, IF/ICC  |
| <b>Host:</b>                  | Rabbit   |
| <b>Recommended dilutions:</b> | WB: 0.01-5 µg/ml, IHC: 5-20 µg/ml, IF/ICC: 5-20 µg/ml. Optimal dilutions/concentrations should be determined by the end user.              |
| <b>Conjugation:</b>           | Unconjugated   |
| <b>Immunogen:</b>             | MAP2K2 (Leu44-Ser313)  |
| <b>Form:</b>                  | Liquid   |
| <b>Purification:</b>          | Purified by antigen-specific affinity chromatography, followed by Protein A affinity chromatography.                                       |
| <b>Storage:</b>               | Aliquot and store at -20°C. Avoid repeated freeze/thaw cycles.   |
| <b>Buffer:</b>                | 0.01 M PBS, pH 7.4, containing 0.05% Proclin-300, 50% glycerol.  |
| <b>Note:</b>                  | THIS PRODUCT IS FOR RESEARCH USE ONLY. NOT FOR USE IN DIAGNOSTIC, THERAPEUTIC OR COSMETIC PROCEDURES. NOT FOR HUMAN OR ANIMAL CONSUMPTION. |