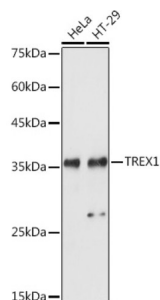
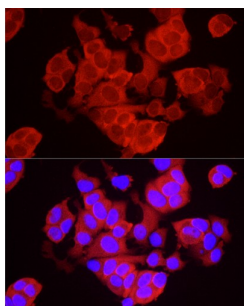


Three Prime Repair Exonuclease 1 (TREX1) Antibody

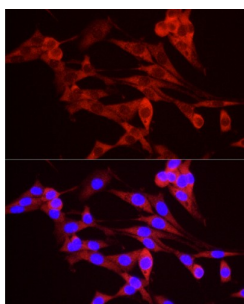
Catalogue No.: abx005200



Western blot analysis of extracts of various cell lines using TREX1 Antibody (1/1000 dilution).



Immunofluorescence analysis of MCF7 cells using TREX1 Antibody (1/50 dilution, 40x lens).
Blue: DAPI for nuclear staining.



Immunofluorescence analysis of PC-12 cells using TREX1 antibody (1/50 dilution, 40x lens).
Blue: DAPI for nuclear staining.

TREX1 Antibody is a Rabbit Polyclonal antibody against TREX1. This gene encodes a nuclear protein with 3' exonuclease activity. The encoded protein may play a role in DNA repair and serve as a proofreading function for DNA polymerase. Mutations in this gene result in Aicardi-Goutieres syndrome, chilblain lupus, Cree encephalitis, and other diseases of the immune system. Alternative splicing results in multiple transcript variants.

Target: Three Prime Repair Exonuclease 1 (TREX1)

Clonality: Polyclonal

Reactivity: Human, Mouse

Tested Applications: WB, IF/ICC

Host: Rabbit

Recommended dilutions: WB: 1/500 - 1/2000, IF/ICC: 1/50 - 1/200. Optimal dilutions/concentrations should be determined by the end user.

Datasheet

Version: 4.0.0
Revision date: 06 Mar 2025



Conjugation:	Unconjugated
Immunogen:	Recombinant fusion protein corresponding to human TREX1
Isotype:	IgG
Form:	Liquid
Purification:	Purified by affinity chromatography.
Storage:	Aliquot and store at -20°C. Avoid repeated freeze/thaw cycles.
UniProt Primary AC:	Q9NSU2 (UniProt , ExPASy)
Gene Symbol:	TREX1
GeneID:	11277
NCBI Accession:	NP_057465.1
String:	9606.ENSP00000296443
Molecular Weight:	Calculated MW: 32 kDa/33 kDa/38 kDa Observed MW: 35 kDa
Buffer:	PBS, pH 7.3, containing 0.01% thiomersal, 50% glycerol.
Concentration:	1 mg/ml
Note:	THIS PRODUCT IS FOR RESEARCH USE ONLY. NOT FOR USE IN DIAGNOSTIC, THERAPEUTIC OR COSMETIC PROCEDURES. NOT FOR HUMAN OR ANIMAL CONSUMPTION.