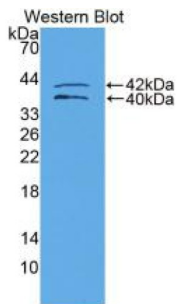
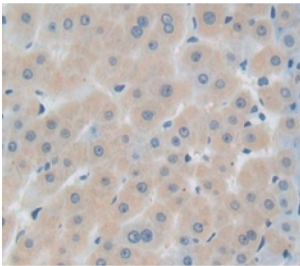


Insulin Like Growth Factor Binding Protein 1 (IGFBP1) Antibody

Catalogue No.: abx104395



Western blot analysis of recombinant Human IGFBP1.



IHC-P analysis of Human Tissue, with DAB staining.

Polyclonal Antibody to Insulin Like Growth Factor Binding Protein 1 (IGFBP1).

Target:	Insulin Like Growth Factor Binding Protein 1 (IGFBP1)
Clonality:	Polyclonal
Reactivity:	Human
Tested Applications:	WB, IHC, IF/ICC
Host:	Rabbit
Recommended dilutions:	WB: 0.01-2 µg/ml, IHC: 5-20 µg/ml, IF/ICC: 5-20 µg/ml. Optimal dilutions/concentrations should be determined by the end user.
Conjugation:	Unconjugated
Immunogen:	IGFBP1 (Asp159-Pro249)
Form:	Liquid
Purification:	Purified by antigen-specific affinity chromatography, followed by Protein A affinity chromatography.
Storage:	Aliquot and store at -20°C. Avoid repeated freeze/thaw cycles.

Datasheet

Version: 2.0.0

Revision date: 13 Jun 2025



UniProt Primary AC: P08833 ([UniProt](#), [ExPASy](#))

KEGG: hsa:3484

String: [9606.ENSP00000275525](#)

Buffer: 0.01 M PBS, pH 7.4, containing 0.05% Proclin-300, 50% glycerol.

Specificity: The antibody is a rabbit polyclonal antibody raised against IGFBP1. It has been selected for its ability to recognize IGFBP1 in immunohistochemical staining and western blotting.

Note: THIS PRODUCT IS FOR RESEARCH USE ONLY. NOT FOR USE IN DIAGNOSTIC, THERAPEUTIC OR COSMETIC PROCEDURES. NOT FOR HUMAN OR ANIMAL CONSUMPTION.

For Reference Only