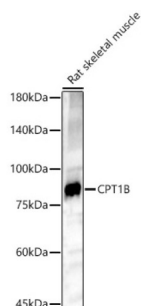
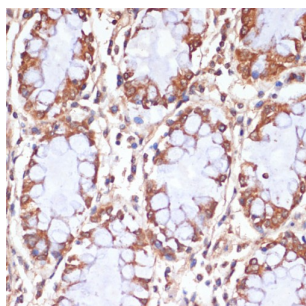


## Carnitine Palmitoyltransferase 1B, Muscle (CPT1B) Antibody

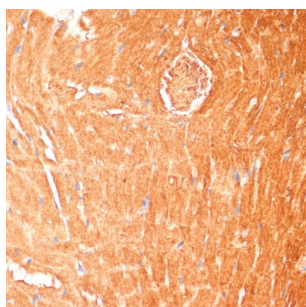
Catalogue No.: abx005212



Western blot analysis of lysates from Rat skeletal muscle, using CPT1B Antibody at 1/500 dilution. Secondary antibody: HRP-conjugated Goat anti-Rabbit IgG (H+L) at 1/10000 dilution. Lysates/proteins: 25 µg per lane. Blocking buffer: 3% nonfat dry milk in TBST. Exposure time: 180s.



Immunohistochemistry analysis of paraffin-embedded Human colon using CPT1B Antibody at dilution of 1/100 (40x lens). Microwave antigen retrieval performed in 0.01 M PBS Buffer (pH 7.2) prior to IHC staining.



Immunohistochemistry analysis of paraffin-embedded Mouse heart using CPT1B Antibody at dilution of 1/100 (40x lens). Microwave antigen retrieval performed in 0.01 M PBS Buffer (pH 7.2) prior to IHC staining.

CPT1B Antibody is a Rabbit Polyclonal antibody against CPT1B. The protein encoded by this gene, a member of the carnitine/choline acetyltransferase family, is the rate-controlling enzyme of the long-chain fatty acid beta-oxidation pathway in muscle mitochondria. This enzyme is required for the net transport of long-chain fatty acyl-CoAs from the cytoplasm into the mitochondria. Multiple transcript variants encoding different isoforms have been found for this gene, and read-through transcripts are expressed from the upstream locus that include exons from this gene.

**Target:** Carnitine Palmitoyltransferase 1B, Muscle (CPT1B)

**Clonality:** Polyclonal

**Reactivity:** Human, Mouse, Rat

**Tested Applications:** ELISA, WB, IHC, IF/ICC

**Host:** Rabbit

# Datasheet

Version: 5.0.0  
Revision date: 23 Jun 2025



**Recommended dilutions:** ELISA: 1 µg/ml, WB: 1/100 - 1/500, IHC-P: 1/50 - 1/200, IF/ICC: 1/50 - 1/200. Not tested in IHC-F.  
Optimal dilutions/concentrations should be determined by the end user.

**Conjugation:** Unconjugated

**Immunogen:** Recombinant fusion protein containing a sequence corresponding to amino acids 533-772 of human CPT1B.

**Isotype:** IgG

**Form:** Liquid

**Purification:** Purified by affinity chromatography.

**Storage:** Aliquot and store at -20°C. Avoid repeated freeze/thaw cycles.

**UniProt Primary AC:** Q92523 ([UniProt](#), [ExPASy](#))

**Gene Symbol:** CPT1B

**GeneID:** [1375](#)

**NCBI Accession:** NP\_004368.1

**KEGG:** hsa:1375

**String:** [9606.ENSP00000379011](#)

**Molecular Weight:** Calculated MW: 88 kDa  
Observed MW: 88 kDa

**Buffer:** PBS, pH 7.3, containing 0.09% sodium azide, 50% glycerol.

**Concentration:** > 0.2 mg/ml

**Note:** THIS PRODUCT IS FOR RESEARCH USE ONLY. NOT FOR USE IN DIAGNOSTIC, THERAPEUTIC OR COSMETIC PROCEDURES. NOT FOR HUMAN OR ANIMAL CONSUMPTION.