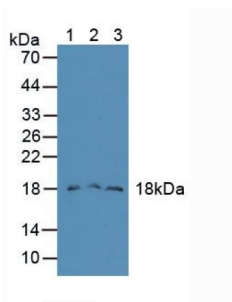
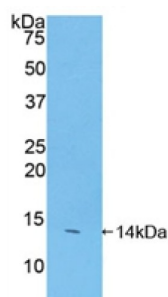


Family With Sequence Similarity 19, Member A2 (FAM19A2) Antibody

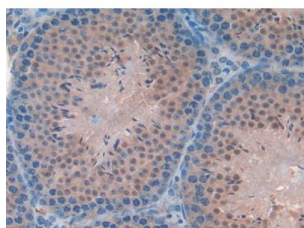
Catalogue No.: abx104475



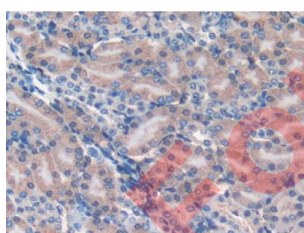
Western blot analysis of (1) Mouse Liver Tissue, (2) Mouse Lung Tissue and (3) Mouse Pancreas Tissue.



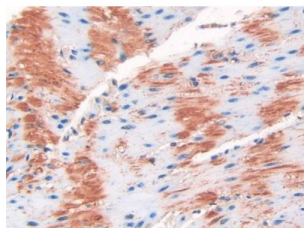
Western blot analysis of recombinant Mouse FAM19A2.



IHC-P analysis of Mouse Testis Tissue, with DAB staining.



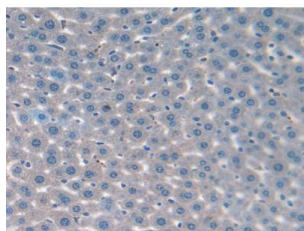
IHC-P analysis of Mouse Kidney Tissue, with DAB staining.



IHC-P analysis of Mouse Stomach Tissue, with DAB staining.

Datasheet

Version: 3.0.0
Revision date: 29 Sep 2025



IHC-P analysis of Mouse Liver Tissue, with DAB staining.

Polyclonal Antibody to Family With Sequence Similarity 19, Member A2 (FAM19A2).

Target:	Family With Sequence Similarity 19, Member A2 (FAM19A2)
Clonality:	Polyclonal
Reactivity:	Mouse
Tested Applications:	WB, IHC, IF/ICC
Host:	Rabbit
Recommended dilutions:	WB: 0.01-5 µg/ml, IHC: 5-20 µg/ml, IF/ICC: 5-20 µg/ml. Optimal dilutions/concentrations should be determined by the end user.
Conjugation:	Unconjugated
Immunogen:	FAM19A2 (Ala31-Ser119)
Form:	Liquid
Purification:	Purified by antigen-specific affinity chromatography, followed by Protein A affinity chromatography.
Storage:	Aliquot and store at -20°C. Avoid repeated freeze/thaw cycles.
Buffer:	0.01 M PBS, pH 7.4, containing 0.05% Proclin-300, 50% glycerol.
Note:	THIS PRODUCT IS FOR RESEARCH USE ONLY. NOT FOR USE IN DIAGNOSTIC, THERAPEUTIC OR COSMETIC PROCEDURES. NOT FOR HUMAN OR ANIMAL CONSUMPTION.