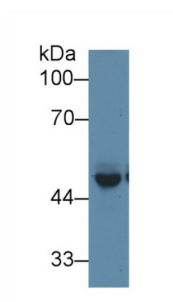
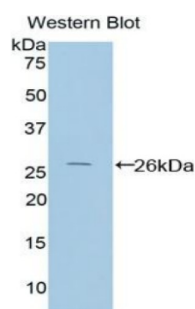


## Protein Interacting With Protein Kinase C Alpha 1 (PICK1) Antibody

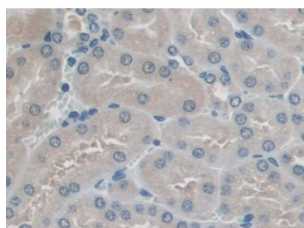
Catalogue No.: abx104548



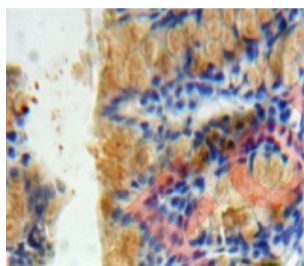
Western blot analysis of Mouse Cerebrum lysate, using Mouse PICK1 Antibody (1 µg/ml) and HRP-conjugated Goat Anti-Rabbit antibody ([abx400043](#), 0.2 µg/ml).



Western blot analysis of the recombinant protein.



IHC-P analysis of Mouse Kidney Tissue, with DAB staining.



IHC-P analysis of Bowels tissue, with DAB staining.

Polyclonal Antibody to Protein Interacting With Protein Kinase C Alpha 1 (PICK1).

**Target:** Protein Interacting With Protein Kinase C Alpha 1 (PICK1)

**Clonality:** Polyclonal

**Reactivity:** Mouse

# Datasheet

Version: 3.0.0

Revision date: 06 Sep 2025



**Tested Applications:** WB, IHC, IF/ICC

**Host:** Rabbit

**Recommended dilutions:** WB: 0.01-2 µg/ml, IHC: 5-20 µg/ml, IF/ICC: 5-20 µg/ml. Optimal dilutions/concentrations should be determined by the end user.

**Conjugation:** Unconjugated

**Immunogen:** PICK1 (Thr24-Lys229)

**Form:** Liquid

**Purification:** Purified by antigen-specific affinity chromatography, followed by Protein A affinity chromatography.

**Storage:** Aliquot and store at -20°C. Avoid repeated freeze/thaw cycles.

**UniProt Primary AC:** Q62083 ([UniProt](#), [ExPASy](#))

**String:** [10090.ENSMUSP00000128126](#)

**Buffer:** 0.01 M PBS, pH 7.4, containing 0.05% Proclin-300, 50% glycerol.

**Note:** THIS PRODUCT IS FOR RESEARCH USE ONLY. NOT FOR USE IN DIAGNOSTIC, THERAPEUTIC OR COSMETIC PROCEDURES. NOT FOR HUMAN OR ANIMAL CONSUMPTION.