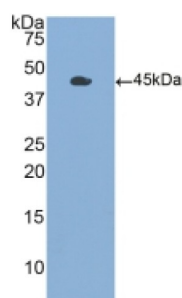


Granulocyte-Macrophage Colony-Stimulating Factor (CSF2) Antibody

Catalogue No.: abx104579



Western blot analysis of recombinant Human CSF2.

Polyclonal Antibody to CSF2 (CSF2).

Target:	Granulocyte-Macrophage Colony-Stimulating Factor (CSF2)
Research Area:	Hematology
Clonality:	Polyclonal
Reactivity:	Human
Tested Applications:	WB, IHC, IF/ICC
Host:	Rabbit
Recommended dilutions:	WB: 0.01-2 µg/ml, IHC: 5-20 µg/ml, IF/ICC: 5-20 µg/ml. Optimal dilutions/concentrations should be determined by the end user.
Conjugation:	Unconjugated
Immunogen:	CSF2 (Ala18-Glu144)
Form:	Liquid
Purification:	Purified by antigen-specific affinity chromatography, followed by Protein A affinity chromatography.
Storage:	Aliquot and store at -20°C. Avoid repeated freeze/thaw cycles.
UniProt Primary AC:	P04141 (UniProt , ExPASy)
GabiPD GreenCard:	CSF2
KEGG:	hsa:1437

Datasheet

Version: 5.0.0

Revision date: 12 Jul 2025



String: [9606.ENSF00000296871](#)

Buffer: 0.01 M PBS, pH 7.4, containing 0.05% Proclin-300, 50% glycerol.

Specificity: The antibody is a rabbit polyclonal antibody raised against GMCSF. It has been selected for its ability to recognize GMCSF in immunohistochemical staining and western blotting.

Note: THIS PRODUCT IS FOR RESEARCH USE ONLY. NOT FOR USE IN DIAGNOSTIC, THERAPEUTIC OR COSMETIC PROCEDURES. NOT FOR HUMAN OR ANIMAL CONSUMPTION.

For Reference Only