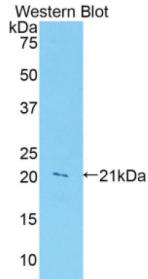
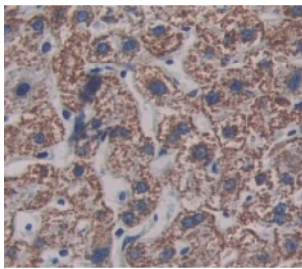


Leukocyte Associated Immunoglobulin Like Receptor 1 (LAIR1) Antibody

Catalogue No.: abx104583



Western blot analysis of the recombinant protein.



IHC-P analysis of Human Tissue, with DAB staining.

Polyclonal Antibody to Leukocyte Associated Immunoglobulin Like Receptor 1 (LAIR1).

- Target:** Leukocyte Associated Immunoglobulin Like Receptor 1 (LAIR1)
- Clonality:** Polyclonal
- Reactivity:** Human
- Tested Applications:** WB, IHC, IF/ICC
- Host:** Rabbit
- Recommended dilutions:** WB: 0.01-2 µg/ml, IHC: 5-20 µg/ml, IF/ICC: 5-20 µg/ml. Optimal dilutions/concentrations should be determined by the end user.
- Conjugation:** Unconjugated
- Immunogen:** LAIR1 (Pro40-Gln208)
- Form:** Liquid
- Purification:** Purified by antigen-specific affinity chromatography, followed by Protein A affinity chromatography.

Datasheet

Version: 2.0.0

Revision date: 16 Jul 2025



Storage: Aliquot and store at -20°C. Avoid repeated freeze/thaw cycles.

UniProt Primary AC: Q6GTX8 ([UniProt](#), [ExPASy](#))

KEGG: hsa:3903

String: [9606.ENSP00000375622](#)

Buffer: 0.01 M PBS, pH 7.4, containing 0.05% Proclin-300, 50% glycerol.

Note: THIS PRODUCT IS FOR RESEARCH USE ONLY. NOT FOR USE IN DIAGNOSTIC, THERAPEUTIC OR COSMETIC PROCEDURES. NOT FOR HUMAN OR ANIMAL CONSUMPTION.

For Reference Only