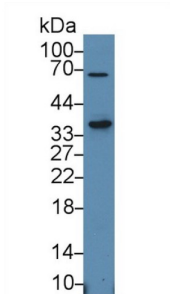
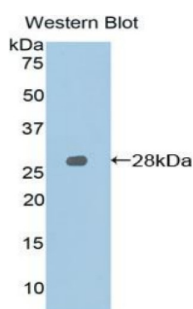


Signaling Lymphocytic Activation Molecule Family Member 1 / CD150 (SLAMF1) Antibody

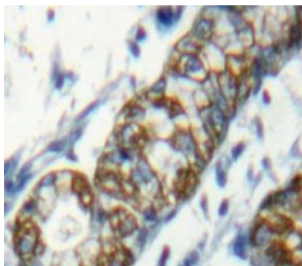
Catalogue No.: abx104708



Western blot analysis of Human HepG2 cell lysate, using Human SLAMF1 Antibody (1 µg/ml) and HRP-conjugated Goat Anti-Rabbit antibody ([abx400043](#), 0.2 µg/ml).



Western blot analysis of the recombinant protein.



IHC-P analysis of Stomach tissue, with DAB staining.

Polyclonal Antibody to Signaling Lymphocytic Activation Molecule Family, Member 1 (SLAMF1).

Target: Signaling Lymphocytic Activation Molecule Family Member 1 / CD150 (SLAMF1)

Clonality: Polyclonal

Reactivity: Human

Tested Applications: WB, IHC, IF/ICC

Host: Rabbit

Recommended dilutions: WB: 0.01-2 µg/ml, IHC: 5-20 µg/ml, IF/ICC: 5-20 µg/ml. Optimal dilutions/concentrations should be determined by the end user.

Datasheet

Version: 4.0.0

Revision date: 06 Mar 2025



Conjugation:	Unconjugated
Immunogen:	SLAMF1 (Phe19-Lys236)
Form:	Liquid
Purification:	Purified by antigen-specific affinity chromatography, followed by Protein A affinity chromatography.
Storage:	Aliquot and store at -20°C. Avoid repeated freeze/thaw cycles.
Buffer:	0.01 M PBS, pH 7.4, containing 0.05% Proclin-300, 50% glycerol.
Note:	THIS PRODUCT IS FOR RESEARCH USE ONLY. NOT FOR USE IN DIAGNOSTIC, THERAPEUTIC OR COSMETIC PROCEDURES. NOT FOR HUMAN OR ANIMAL CONSUMPTION.

For Reference Only