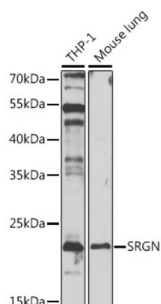


Serglycin (SRGN) Antibody

Catalogue No.: abx005274



Western blot analysis of extracts of various cell lines using SRGN Antibody (1/1000 dilution).

SRGN Antibody is a Rabbit Polyclonal antibody against SRGN. This gene encodes a protein best known as a hematopoietic cell granule proteoglycan. Proteoglycans stored in the secretory granules of many hematopoietic cells also contain a protease-resistant peptide core, which may be important for neutralizing hydrolytic enzymes. This encoded protein was found to be associated with the macromolecular complex of granzymes and perforin, which may serve as a mediator of granule-mediated apoptosis. Two transcript variants, only one of them protein-coding, have been found for this gene.

Target: Serglycin (SRGN)

Clonality: Polyclonal

Reactivity: Human, Mouse

Tested Applications: WB

Host: Rabbit

Recommended dilutions: WB: 1/500 - 1/2000. Optimal dilutions/concentrations should be determined by the end user.

Conjugation: Unconjugated

Immunogen: Recombinant fusion protein corresponding to human SRGN

Isotype: IgG

Form: Liquid

Purification: Purified by affinity chromatography.

Storage: Aliquot and store at -20°C. Avoid repeated freeze/thaw cycles.

UniProt Primary AC: P10124 ([UniProt](#), [ExPASy](#))

Datasheet

Version: 5.0.0

Revision date: 29 Jul 2025



Gene Symbol: SRGN

GeneID: [5552](#)

NCBI Accession: NP_002718.2

KEGG: hsa:5552

String: [9606.ENSP00000242465](#)

Molecular Weight: Calculated MW: 17 kDa
Observed MW: 23 kDa

Buffer: PBS, pH 7.3, containing 0.02% sodium azide, 50% glycerol.

Concentration: 1 mg/ml

Note: THIS PRODUCT IS FOR RESEARCH USE ONLY. NOT FOR USE IN DIAGNOSTIC, THERAPEUTIC OR COSMETIC PROCEDURES. NOT FOR HUMAN OR ANIMAL CONSUMPTION.

For Reference Only