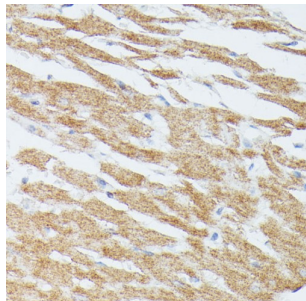
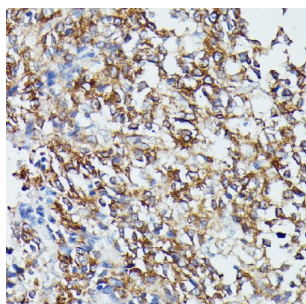


Dual Specificity Mitogen-Activated Protein Kinase Kinase 5 (MAP2K5) Antibody

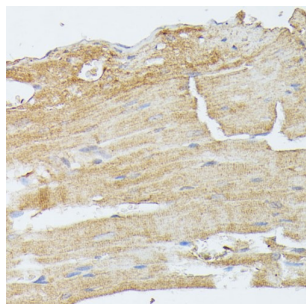
Catalogue No.: abx005276



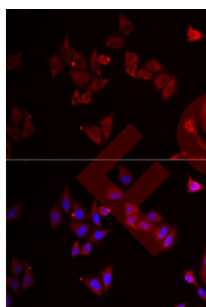
Immunohistochemistry of paraffin-embedded Rat heart using MAP2K5 Antibody (1/100 dilution, 40x lens).



Immunohistochemistry of paraffin-embedded Human appendix using MAP2K5 Antibody (1/100 dilution, 40x lens).



Immunohistochemistry of paraffin-embedded Mouse heart using MAP2K5 Antibody (1/100 dilution, 40x lens).



Immunofluorescence analysis of MCF7 cells using MAP2K5 Antibody

MAP2K5 Antibody is a Rabbit Polyclonal antibody against MAP2K5. The protein encoded by this gene is a dual specificity protein kinase that belongs to the MAP kinase kinase family. This kinase specifically interacts with and activates MAPK7/ERK5. This kinase itself can be phosphorylated and activated by MAP3K3/MEKK3, as well as by atypical protein kinase C isoforms (aPKCs). The signal cascade mediated by this kinase is involved in growth factor stimulated cell proliferation and muscle cell differentiation. Three alternatively spliced transcript variants of this gene encoding distinct isoforms have been described.

Target:

Dual Specificity Mitogen-Activated Protein Kinase Kinase 5 (MAP2K5)

Datasheet

Version: 3.0.0
Revision date: 01 Jul 2025



Clonality:	Polyclonal
Reactivity:	Human, Mouse, Rat
Tested Applications:	IHC, IF/ICC
Host:	Rabbit
Recommended dilutions:	IHC-P: 1/50 - 1/200, IF/ICC: 1/50 - 1/100. Not tested in IHC-F. Optimal dilutions/concentrations should be determined by the end user.
Conjugation:	Unconjugated
Immunogen:	Recombinant fusion protein corresponding to human MAP2K5
Isotype:	IgG
Form:	Liquid
Purification:	Purified by affinity chromatography.
Storage:	Aliquot and store at -20°C. Avoid repeated freeze/thaw cycles.
UniProt Primary AC:	Q13163 (UniProt , ExPASy)
Gene Symbol:	MAP2K5
GeneID:	5607
NCBI Accession:	NP_660143.1
KEGG:	hsa:5607
String:	9606.ENSP00000178640
Buffer:	PBS, pH 7.3, containing 0.02% sodium azide, 50% glycerol.
Concentration:	1 mg/ml
Note:	THIS PRODUCT IS FOR RESEARCH USE ONLY. NOT FOR USE IN DIAGNOSTIC, THERAPEUTIC OR COSMETIC PROCEDURES. NOT FOR HUMAN OR ANIMAL CONSUMPTION.