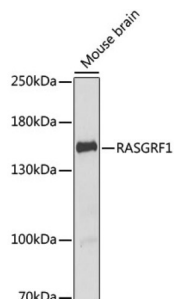


Ras-Specific Guanine Nucleotide-Releasing Factor 1 (RASGRF1) Antibody

Catalogue No.: abx005283



Western blot analysis of lysates from mouse brain, using RASGRF1 Antibody at 1/1000 dilution. Secondary antibody: HRP-conjugated Goat anti-Rabbit IgG (H+L) at 1/10000 dilution. Lysates/proteins: 25 µg per lane. Blocking buffer: 3% nonfat dry milk in TBST. Exposure time: 90s.

RASGRF1 Antibody is a Rabbit Polyclonal antibody against RASGRF1. The protein encoded by this gene is a guanine nucleotide exchange factor (GEF) similar to the *Saccharomyces cerevisiae* CDC25 gene product. Functional analysis has demonstrated that this protein stimulates the dissociation of GDP from RAS protein. The studies of the similar gene in mouse suggested that the Ras-GEF activity of this protein in brain can be activated by Ca²⁺ influx, muscarinic receptors, and G protein beta-gamma subunit. Mouse studies also indicated that the Ras-GEF signaling pathway mediated by this protein may be important for long-term memory. Alternatively spliced transcript variants encoding distinct isoforms have been reported.

Target:	Ras-Specific Guanine Nucleotide-Releasing Factor 1 (RASGRF1)
Clonality:	Polyclonal
Reactivity:	Mouse
Tested Applications:	ELISA, WB
Host:	Rabbit
Recommended dilutions:	ELISA: 1 µg/ml, WB: 1/500 - 1/2000. Optimal dilutions/concentrations should be determined by the end user.
Conjugation:	Unconjugated
Immunogen:	Recombinant protein corresponding to RASGRF1. The exact sequence is proprietary.
Isotype:	IgG
Form:	Liquid
Purification:	Purified by affinity chromatography.
Storage:	Aliquot and store at -20°C. Avoid repeated freeze/thaw cycles.

Datasheet

Version: 5.0.0

Revision date: 20 Aug 2025



UniProt Primary AC: Q13972 ([UniProt](#), [ExPASy](#))

Gene Symbol: RASGRF1

GeneID: [5923](#)

OMIM: [606600](#)

NCBI Accession: NP_001139120.1

HGNC: 9875

KEGG: hsa:5923

Ensembl: ENSG00000058335

String: [9606.ENSP00000405963](#)

Molecular Weight: Calculated MW: 145 kDa
Observed MW: 145 kDa

Buffer: PBS, pH 7.3, containing 0.02% sodium azide, 50% glycerol.

Concentration: > 0.2 mg/ml

Note: THIS PRODUCT IS FOR RESEARCH USE ONLY. NOT FOR USE IN DIAGNOSTIC, THERAPEUTIC OR COSMETIC PROCEDURES. NOT FOR HUMAN OR ANIMAL CONSUMPTION.