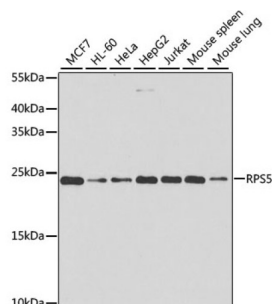


Ribosomal Protein S5 (RPS5) Antibody

Catalogue No.: abx005290



Western blot analysis of extracts of various cell lines using RPS5 Antibody (1/1000 dilution).

RPS5 Antibody is a Rabbit Polyclonal antibody against RPS5. Ribosomes, the organelles that catalyze protein synthesis, consist of a small 40S subunit and a large 60S subunit. Together these subunits are composed of 4 RNA species and approximately 80 structurally distinct proteins. This gene encodes a ribosomal protein that is a component of the 40S subunit. The protein belongs to the S7P family of ribosomal proteins. It is located in the cytoplasm. Variable expression of this gene in colorectal cancers compared to adjacent normal tissues has been observed, although no correlation between the level of expression and the severity of the disease has been found. As is typical for genes encoding ribosomal proteins, there are multiple processed pseudogenes of this gene dispersed through the genome.

Target: Ribosomal Protein S5 (RPS5)

Clonality: Polyclonal

Reactivity: Human, Mouse

Tested Applications: WB

Host: Rabbit

Recommended dilutions: WB: 1/500 - 1/2000. Optimal dilutions/concentrations should be determined by the end user.

Conjugation: Unconjugated

Immunogen: Recombinant fusion protein corresponding to human RPS5

Isotype: IgG

Form: Liquid

Purification: Purified by affinity chromatography.

Storage: Aliquot and store at -20°C. Avoid repeated freeze/thaw cycles.

UniProt Primary AC: P46782 ([UniProt](#), [ExPASy](#))

Datasheet

Version: 4.0.0
Revision date: 02 Oct 2025



Gene Symbol: RPS5

GeneID: [6193](#)

NCBI Accession: NP_001000.2

KEGG: hsa:6193

String: [9606.ENSP00000472985](#)

Molecular Weight: Calculated MW: 22 kDa
Observed MW: 23 kDa

Buffer: PBS, pH 7.3, containing 0.02% sodium azide, 50% glycerol.

Concentration: 1 mg/ml

Note: THIS PRODUCT IS FOR RESEARCH USE ONLY. NOT FOR USE IN DIAGNOSTIC, THERAPEUTIC OR COSMETIC PROCEDURES. NOT FOR HUMAN OR ANIMAL CONSUMPTION.

For Reference Only