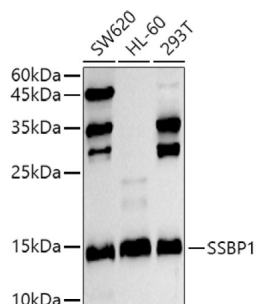
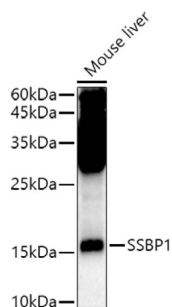


Single Stranded DNA Binding Protein 1 (SSBP1) Antibody

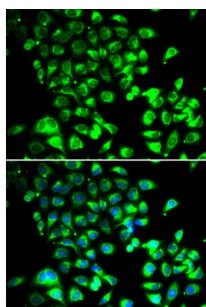
Catalogue No.: abx005297



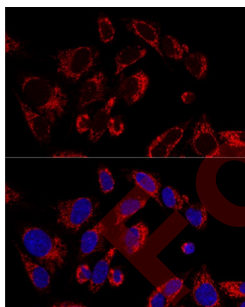
Western blot analysis of various lysates using SSBP1 Antibody at 1/500 dilution. Secondary antibody: HRP-conjugated Goat anti-Rabbit IgG (H+L) at 1/10000 dilution. Lysates/proteins: 25 µg per lane. Blocking buffer: 3% nonfat dry milk in TBST. Exposure time: 30s.



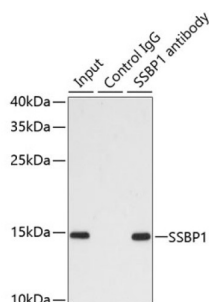
Western blot analysis of lysates from Mouse liver, using SSBP1 Antibody at 1/500 dilution. Secondary antibody: HRP-conjugated Goat anti-Rabbit IgG (H+L) at 1/10000 dilution. Lysates/proteins: 25 µg per lane. Blocking buffer: 3% nonfat dry milk in TBST. Exposure time: 90s.



Immunofluorescence analysis of U2OS cells using SSBP1 Antibody. Secondary antibody: Cy3-conjugated Goat anti-Rabbit IgG (H+L) at 1/500 dilution. Blue: DAPI for nuclear staining.



Confocal immunofluorescence analysis of U2OS cells using SSBP1 Antibody at dilution of 1/100. Blue: DAPI for nuclear staining.



Immunoprecipitation analysis of 200 µg extracts of MCF7 cells using 1 µg SSBP1 antibody. Western blot was performed from the immunoprecipitate using SSBP1 antibody at a dilution of 1/1000.

Datasheet

Version: 4.0.0
Revision date: 12 Sep 2025



SSBP1 Antibody is a Rabbit Polyclonal antibody against SSBP1. SSBP1 is a housekeeping gene involved in mitochondrial biogenesis (Tiranti et al., 1995).

Target:	Single Stranded DNA Binding Protein 1 (SSBP1)
Clonality:	Polyclonal
Reactivity:	Human, Mouse
Tested Applications:	ELISA, WB, IF/ICC, IP
Host:	Rabbit
Recommended dilutions:	ELISA: 1 µg/ml, WB: 1/500 - 1/2000, IF/ICC: 1/50 - 1/100, IP: 0.5 µg - 4 µg antibody per 200 µg - 400 µg extracts of whole cells. Optimal dilutions/concentrations should be determined by the end user.
Conjugation:	Unconjugated
Immunogen:	Recombinant fusion protein containing a sequence corresponding to amino acids 1-148 of human SSBP1.
Isotype:	IgG
Form:	Liquid
Purification:	Purified by affinity chromatography.
Storage:	Aliquot and store at -20°C. Avoid repeated freeze/thaw cycles.
UniProt Primary AC:	Q04837 (UniProt , ExPASy)
Gene Symbol:	SSBP1
GeneID:	6742
NCBI Accession:	NP_001243442.1
KEGG:	hsa:6742
String:	9606.ENSP00000419665
Molecular Weight:	Calculated MW: 17 kDa Observed MW: 17 kDa
Buffer:	PBS, pH 7.3, containing 0.02% sodium azide, 50% glycerol.

Datasheet

Version: 4.0.0

Revision date: 12 Sep 2025



Concentration: > 0.2 mg/ml

Note: THIS PRODUCT IS FOR RESEARCH USE ONLY. NOT FOR USE IN DIAGNOSTIC, THERAPEUTIC OR COSMETIC PROCEDURES. NOT FOR HUMAN OR ANIMAL CONSUMPTION.

For Reference Only