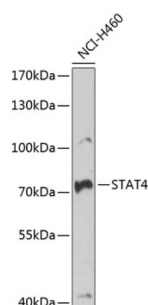
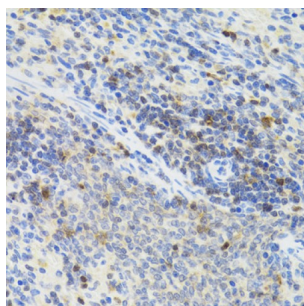


Signal Transducer And Activator of Transcription 4 (STAT4) Antibody

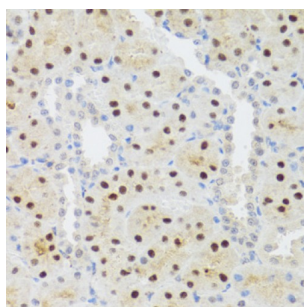
Catalogue No.: abx005299



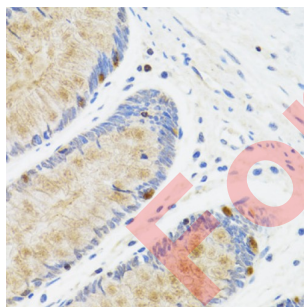
Western blot analysis of extracts of NCI-H460 cells using STAT4 Antibody (1/1000 dilution).



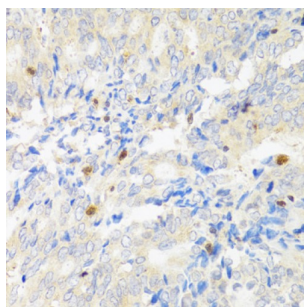
Immunohistochemistry of paraffin-embedded Rat spleen using STAT4 Antibody (1/100 dilution, 40x lens).



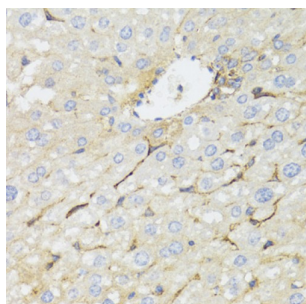
Immunohistochemistry of paraffin-embedded Rat kidney using STAT4 Antibody (1/100 dilution, 40x lens).



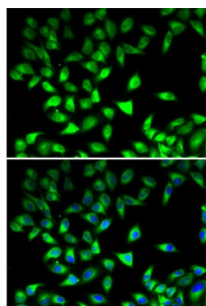
Immunohistochemistry of paraffin-embedded Human rectum using STAT4 Antibody (1/100 dilution, 40x lens).



Immunohistochemistry of paraffin-embedded Human rectal cancer using STAT4 Antibody (1/100 dilution, 40x lens).



Immunohistochemistry of paraffin-embedded Mouse liver using STAT4 Antibody (1/100 dilution, 40x lens).



Immunofluorescence analysis of MCF7 cells using STAT4 Antibody

STAT4 Antibody is a Rabbit Polyclonal antibody against STAT4. The protein encoded by this gene is a member of the STAT family of transcription factors. In response to cytokines and growth factors, STAT family members are phosphorylated by the receptor associated kinases, and then form homo- or heterodimers that translocate to the cell nucleus where they act as transcription activators. This protein is essential for mediating responses to IL12 in lymphocytes, and regulating the differentiation of T helper cells. Mutations in this gene may be associated with systemic lupus erythematosus and rheumatoid arthritis. Alternate splicing results in multiple transcript variants that encode the same protein.

Target: Signal Transducer And Activator of Transcription 4 (STAT4)

Clonality: Polyclonal

Reactivity: Human, Mouse, Rat

Tested Applications: WB, IHC, IF/ICC

Host: Rabbit

Recommended dilutions: WB: 1/500 - 1/2000, IHC-P: 1/50 - 1/200, IF/ICC: 1/50 - 1/100. Not tested in IHC-F. Optimal dilutions/concentrations should be determined by the end user.

Conjugation: Unconjugated

Immunogen: Recombinant fusion protein corresponding to human STAT4

Isotype: IgG

Form: Liquid

Datasheet

Version: 3.0.0
Revision date: 08 Sep 2025



Purification:	Purified by affinity chromatography.
Storage:	Aliquot and store at -20°C. Avoid repeated freeze/thaw cycles.
UniProt Primary AC:	Q14765 (UniProt , ExPASy)
Gene Symbol:	STAT4
GeneID:	6775
NCBI Accession:	NP_003142.1
KEGG:	hsa:6775
String:	9606.ENSP00000376134
Molecular Weight:	Calculated MW: 85 kDa Observed MW: 76 kDa
Buffer:	PBS, pH 7.3, containing 0.02% sodium azide, 50% glycerol.
Concentration:	1 mg/ml
Note:	THIS PRODUCT IS FOR RESEARCH USE ONLY. NOT FOR USE IN DIAGNOSTIC, THERAPEUTIC OR COSMETIC PROCEDURES. NOT FOR HUMAN OR ANIMAL CONSUMPTION.