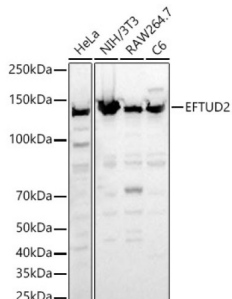
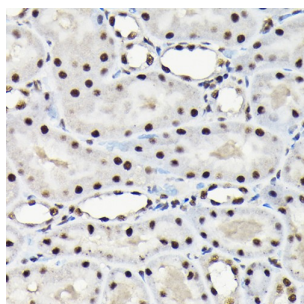


# Elongation Factor Tu GTP-Binding Domain-Containing Protein 2 (EFTUD2) Antibody

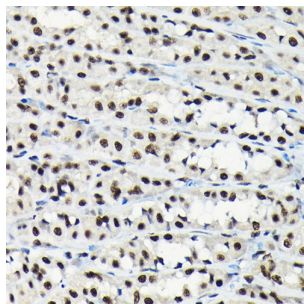
Catalogue No.: abx005330



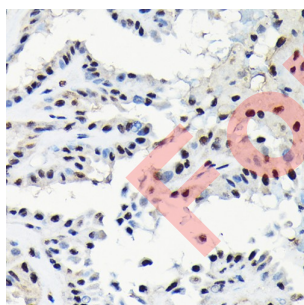
Western blot analysis of various lysates, using EFTUD2 Antibody at 1/1000 dilution. Secondary antibody: HRP-conjugated Goat anti-Rabbit IgG (H+L) at 1/10000 dilution. Lysates/proteins: 25 µg per lane. Blocking buffer: 3% nonfat dry milk in TBST. Exposure time: 30s.



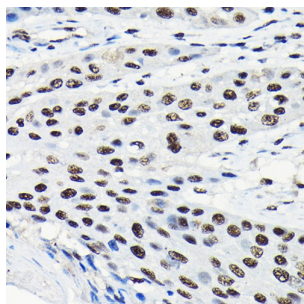
Immunohistochemistry analysis of paraffin-embedded Rat brain tissue using EFTUD2 Antibody at a dilution of 1/100 (40x lens). High pressure antigen retrieval was performed in 0.01 M citrate buffer (pH 6.0) prior to IHC staining.



Immunohistochemistry analysis of paraffin-embedded Mouse brain tissue using EFTUD2 Antibody at a dilution of 1/100 (40x lens). High pressure antigen retrieval was performed in 0.01 M citrate buffer (pH 6.0) prior to IHC staining.



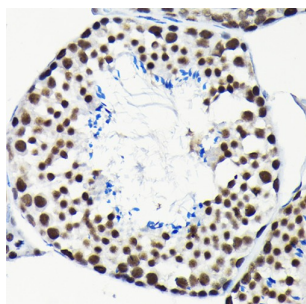
Immunofluorescence analysis of C6 cells using EFTUD2 Antibody at dilution of 1/100. Secondary antibody: Cy3-conjugated Goat anti-Rabbit IgG (H+L) at 1/500 dilution. Blue: DAPI for nuclear staining.



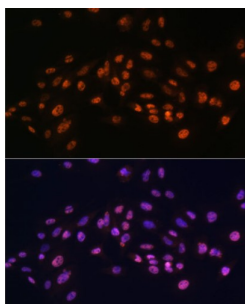
Immunofluorescence analysis of HeLa cells using EFTUD2 Antibody at dilution of 1/100. Secondary antibody: Cy3-conjugated Goat anti-Rabbit IgG (H+L) at 1/500 dilution. Blue: DAPI for nuclear staining.

# Datasheet

Version: 7.0.0  
Revision date: 14 Jul 2025



Immunofluorescence analysis of L929 cells using EFTUD2 Antibody at dilution of 1/100. Secondary antibody: Cy3-conjugated Goat anti-Rabbit IgG (H+L) at 1/500 dilution. Blue: DAPI for nuclear staining.



Immunoprecipitation analysis of 300 µg extracts of NTH-3T3 cells using 3 µg EFTUD2 Antibody. Western blot was performed from the immunoprecipitate using EFTUD2 Antibody at a dilution of 1/2000.

EFTUD2 Antibody is a Rabbit Polyclonal antibody against EFTUD2. This gene encodes a GTPase which is a component of the spliceosome complex which processes precursor mRNAs to produce mature mRNAs. Mutations in this gene are associated with mandibulofacial dysostosis with microcephaly. Multiple transcript variants encoding different isoforms have been found for this gene.

<b>Target:</b>	Elongation Factor Tu GTP-Binding Domain-Containing Protein 2 (EFTUD2)
<b>Clonality:</b>	Polyclonal
<b>Reactivity:</b>	Human, Mouse, Rat
<b>Tested Applications:</b>	ELISA, WB, IHC, IF/ICC, IP
<b>Host:</b>	Rabbit
<b>Recommended dilutions:</b>	ELISA: 1 µg/ml, WB: 1/500 - 1/1000, IHC-P: 1/50 - 1/200, IF/ICC: 1/50 - 1/100, IP: 0.5 µg - 4 µg antibody per 200 µg - 400 µg extracts of whole cells. Not tested in IHC-F. Optimal dilutions/concentrations should be determined by the end user.
<b>Conjugation:</b>	Unconjugated
<b>Immunogen:</b>	Recombinant protein corresponding to EFTUD2. The exact sequence is proprietary.
<b>Isotype:</b>	IgG
<b>Form:</b>	Liquid

# Datasheet

Version: 7.0.0  
Revision date: 14 Jul 2025



<b>Purification:</b>	Purified by affinity chromatography.
<b>Storage:</b>	Aliquot and store at -20°C. Avoid repeated freeze/thaw cycles.
<b>UniProt Primary AC:</b>	Q15029 ( <a href="#">UniProt</a> , <a href="#">ExPASy</a> )
<b>Gene Symbol:</b>	EFTUD2
<b>GeneID:</b>	<a href="#">9343</a>
<b>NCBI Accession:</b>	NP_004238.3
<b>KEGG:</b>	hsa:9343
<b>String:</b>	<a href="#">9606.ENSP00000392094</a>
<b>Molecular Weight:</b>	Calculated MW: 109 kDa Observed MW: 130 kDa
<b>Buffer:</b>	PBS, pH 7.3, containing 0.05% Proclin-300, 50% glycerol.
<b>Concentration:</b>	> 0.2 mg/ml
<b>Note:</b>	THIS PRODUCT IS FOR RESEARCH USE ONLY. NOT FOR USE IN DIAGNOSTIC, THERAPEUTIC OR COSMETIC PROCEDURES. NOT FOR HUMAN OR ANIMAL CONSUMPTION.