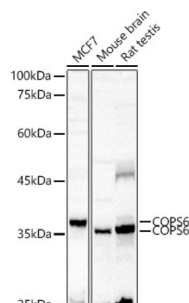
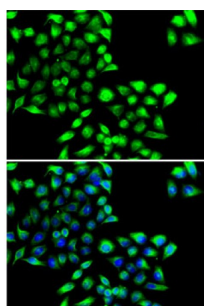


# COP9 Constitutive Photomorphogenic Homolog Subunit 6 (COPS6) Antibody

Catalogue No.: abx005350



Western blot analysis of various lysates using COPS6 Antibody at 1/500 dilution. Secondary antibody: HRP-conjugated Goat anti-Rabbit IgG (H+L) at 1/10000 dilution. Lysates/proteins: 25 µg per lane. Blocking buffer: 3% nonfat dry milk in TBST. Exposure time: 60s.



Immunofluorescence analysis of MCF7 cells using COPS6 Antibody. Secondary antibody: Cy3-conjugated Goat anti-Rabbit IgG (H+L) at 1/500 dilution. Blue: DAPI for nuclear staining.

COPS6 Antibody is a Rabbit Polyclonal antibody against COPS6. The protein encoded by this gene is one of the eight subunits of COP9 signalosome, a highly conserved protein complex that functions as an important regulator in multiple signaling pathways. The structure and function of COP9 signalosome is similar to that of the 19S regulatory particle of 26S proteasome. COP9 signalosome has been shown to interact with SCF-type E3 ubiquitin ligases and act as a positive regulator of E3 ubiquitin ligases. This protein belongs to translation initiation factor 3 (eIF3) superfamily. It is involved in the regulation of cell cycle and likely to be a cellular cofactor for HIV-1 accessory gene product Vpr.

**Target:** COP9 Constitutive Photomorphogenic Homolog Subunit 6 (COPS6)

**Clonality:** Polyclonal

**Reactivity:** Human, Mouse, Rat

**Tested Applications:** ELISA, WB, IF/ICC

**Host:** Rabbit

**Recommended dilutions:** ELISA: 1 µg/ml, WB: 1/100 - 1/500, IF/ICC: 1/50 - 1/100. Optimal dilutions/concentrations should be determined by the end user.

**Conjugation:** Unconjugated

**Immunogen:** Recombinant fusion protein containing a sequence corresponding to amino acids 58-327 of human COPS6.

# Datasheet

Version: 3.0.0  
Revision date: 21 Jun 2025



Isotype:	IgG
Form:	Liquid
Purification:	Purified by affinity chromatography.
Storage:	Aliquot and store at -20°C. Avoid repeated freeze/thaw cycles.
UniProt Primary AC:	Q7L5N1 ( <a href="#">UniProt</a> , <a href="#">ExPASy</a> )
Gene Symbol:	COPS6
GeneID:	<a href="#">10980</a>
NCBI Accession:	NP_006824.2
KEGG:	hsa:10980
String:	<a href="#">9606.ENSP00000304102</a>
Molecular Weight:	Calculated MW: 36 kDa Observed MW: 35 kDa
Buffer:	PBS, pH 7.3, containing 0.05% Proclin-300, 50% glycerol.
Concentration:	> 0.2 mg/ml
Note:	THIS PRODUCT IS FOR RESEARCH USE ONLY. NOT FOR USE IN DIAGNOSTIC, THERAPEUTIC OR COSMETIC PROCEDURES. NOT FOR HUMAN OR ANIMAL CONSUMPTION.