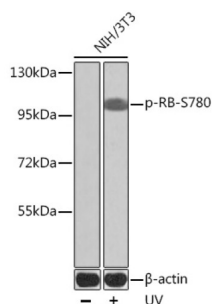
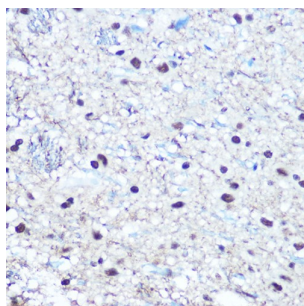


Retinoblastoma Protein 1 Phospho-Ser780 (RB1 pS780) Antibody

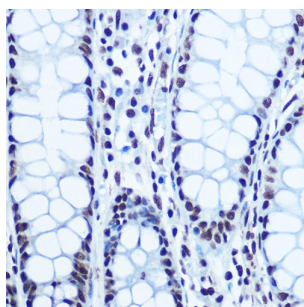
Catalogue No.: abx000491



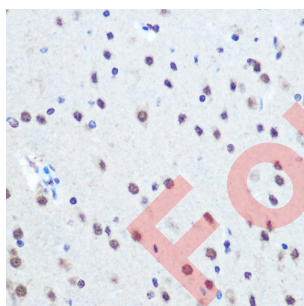
Western blot analysis of lysates from NIH/3T3 cells, using Phospho-RB-S780 Antibody at dilution. NIH/3T3 cells were treated by UV at room temperature for 15-30 minutes. Secondary antibody: HRP-conjugated Goat anti-Rabbit IgG (H+L) at 1/10000 dilution. Lysates/proteins: 25 µg per lane. Blocking buffer: 3% BSA.



Immunohistochemistry analysis of paraffin-embedded Rat brain using Phospho-RB-S780 Antibody at dilution of 1/100 (40x lens). Microwave antigen retrieval performed in 0.01 M Tris/EDTA Buffer (pH 9.0) prior to IHC staining.



Immunohistochemistry analysis of paraffin-embedded Human colon using Phospho-RB-S780 Antibody at dilution of 1/100 (40x lens). Microwave antigen retrieval performed in 0.01 M Tris/EDTA Buffer (pH 9.0) prior to IHC staining.



Immunohistochemistry analysis of paraffin-embedded Mouse brain using Phospho-RB-S780 Antibody at dilution of 1/100 (40x lens). Microwave antigen retrieval performed in 0.01 M Tris/EDTA Buffer (pH 9.0) prior to IHC staining.

RB1 (pS780) Antibody is a Rabbit Polyclonal antibody against RB1 (pS780). The protein encoded by this gene is a negative regulator of the cell cycle and was the first tumor suppressor gene found. The encoded protein also stabilizes constitutive heterochromatin to maintain the overall chromatin structure. The active, hypophosphorylated form of the protein binds transcription factor E2F1. Defects in this gene are a cause of childhood cancer retinoblastoma (RB), bladder cancer, and osteogenic sarcoma.

Target:

Retinoblastoma Protein 1 Phospho-Ser780 (RB1 pS780)

Datasheet

Version: 4.0.0
Revision date: 05 Mar 2025



Clonality:	Polyclonal
Target Modification:	Ser780
Modification:	Phosphorylation
Reactivity:	Human, Mouse, Rat
Tested Applications:	ELISA, WB, IHC
Host:	Rabbit
Recommended dilutions:	ELISA: 1 µg/ml, WB: 1/500 - 1/2000, IHC-P: 1/50 - 1/200. Not tested in IHC-F. Optimal dilutions/concentrations should be determined by the end user.
Conjugation:	Unconjugated
Immunogen:	A synthetic phosphorylated peptide around S780 of human RB.
Isotype:	IgG
Form:	Liquid
Purification:	Purified by affinity chromatography.
Storage:	Aliquot and store at -20°C. Avoid repeated freeze/thaw cycles.
UniProt Primary AC:	P06400 (UniProt , ExPASy)
Gene Symbol:	RB1
GeneID:	5925
NCBI Accession:	NP_000312.2
KEGG:	hsa:5925
String:	9606.ENSP00000267163
Molecular Weight:	Calculated MW: 106 kDa Observed MW: 100 kDa
Buffer:	PBS, pH 7.3, containing 0.05% Proclin-300, 50% glycerol.
Concentration:	> 0.2 mg/ml

Note:

THIS PRODUCT IS FOR RESEARCH USE ONLY. NOT FOR USE IN DIAGNOSTIC, THERAPEUTIC OR COSMETIC PROCEDURES. NOT FOR HUMAN OR ANIMAL CONSUMPTION.

For Reference Only