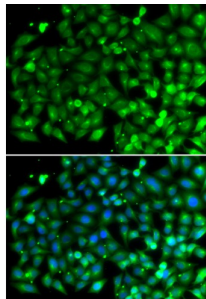


SH3 Domain Containing GRB2 Like, Endophilin B1 (SH3GLB1) Antibody

Catalogue No.: abx005367



Immunofluorescence analysis of A549 cells using Bif-1 Antibody. Secondary antibody: Cy3-conjugated Goat anti-Rabbit IgG (H+L) at 1/500 dilution. Blue: DAPI for nuclear staining.

SH3GLB1 Antibody is a Rabbit Polyclonal antibody against SH3GLB1. This gene encodes a SRC homology 3 domain-containing protein. The encoded protein interacts with the proapoptotic member of the Bcl-2 family, Bcl-2-associated X protein (Bax) and may be involved in regulating apoptotic signaling pathways. This protein may also be involved in maintaining mitochondrial morphology. Alternate splicing results in multiple transcript variants.

Target:	SH3 Domain Containing GRB2 Like, Endophilin B1 (SH3GLB1)
Clonality:	Polyclonal
Reactivity:	Human
Tested Applications:	ELISA, IF/ICC
Host:	Rabbit
Recommended dilutions:	ELISA: 1 µg/ml, IF/ICC: 1/50 - 1/100. Optimal dilutions/concentrations should be determined by the end user.
Conjugation:	Unconjugated
Immunogen:	Recombinant fusion protein containing a sequence corresponding to amino acids 1-365 of human Bif-1.
Isotype:	IgG
Form:	Liquid
Purification:	Purified by affinity chromatography.
Storage:	Aliquot and store at -20°C. Avoid repeated freeze/thaw cycles.
UniProt Primary AC:	Q9Y371 (UniProt , ExPASy)

Datasheet

Version: 3.0.0

Revision date: 11 Aug 2025



Gene Symbol: SH3GLB1

GeneID: [51100](#)

NCBI Accession: NP_057093.1

String: [9606.ENSP00000479919](#)

Molecular Weight: Calculated MW: 41 kDa

Buffer: PBS, pH 7.3, containing 0.02% sodium azide, 50% glycerol.

Concentration: > 0.2 mg/ml

Note: THIS PRODUCT IS FOR RESEARCH USE ONLY. NOT FOR USE IN DIAGNOSTIC, THERAPEUTIC OR COSMETIC PROCEDURES. NOT FOR HUMAN OR ANIMAL CONSUMPTION.

For Reference Only